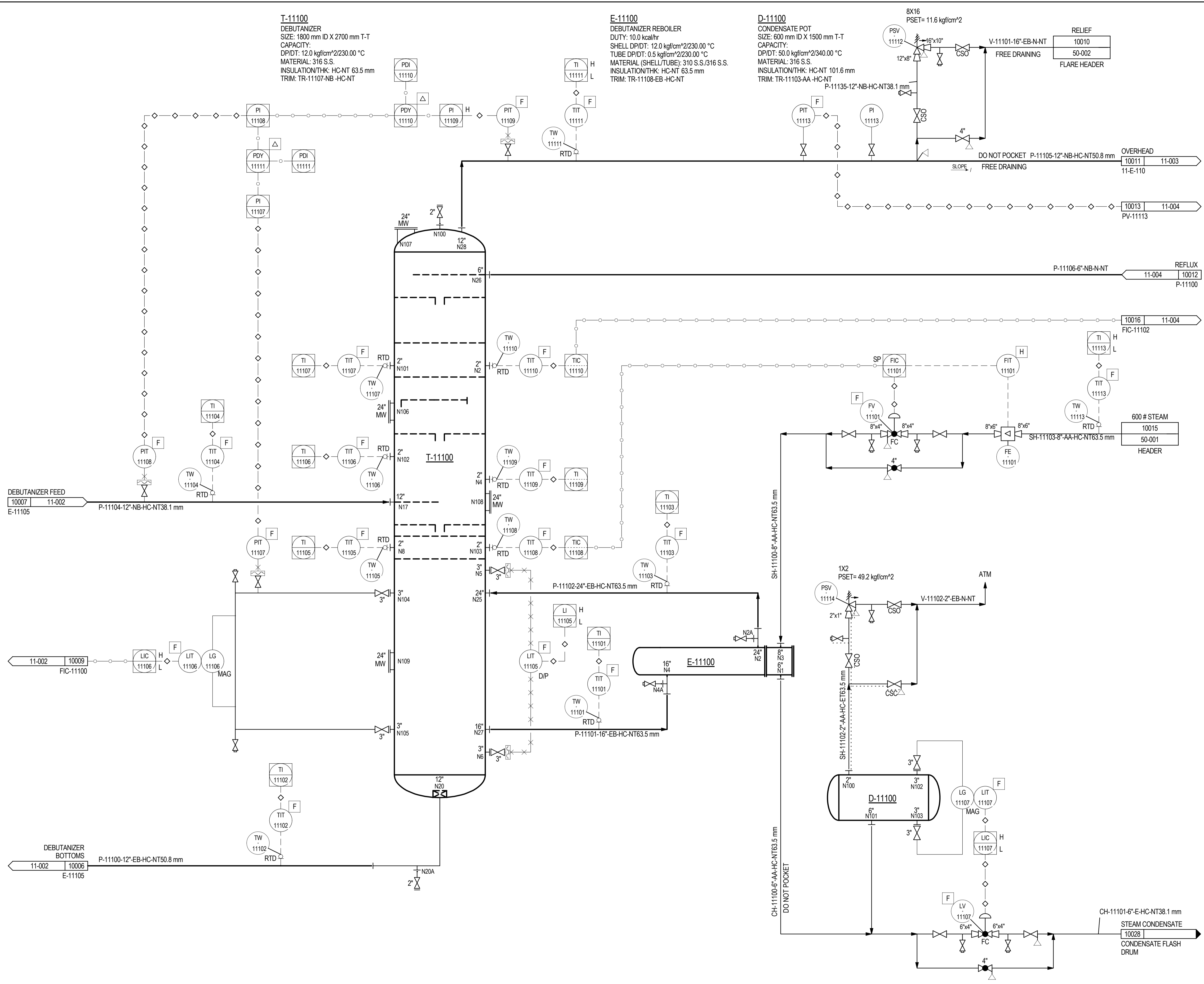


T-11100
 DEBUTANIZER
 SIZE: 1800 mm ID X 2700 mm T-T
 CAPACITY:
 DP/DT: 12.0 kgf/cm²/230.00 °C
 MATERIAL: 316 S.S.
 INSULATION/THK: HC-NT 63.5 mm
 TRIM: TR-11107-NB -HC-NT

E-11100
 DEBUTANIZER REBOILER
 DUTY: 10.0 kcal/hr
 SHELL DP/DT: 12.0 kgf/cm²/230.00 °C
 TUBE DP/DT: 0.5 kgf/cm²/230.00 °C
 MATERIAL (SHELL/TUBE): 310 S.S./316 S.S.
 INSULATION/THK: HC-NT 63.5 mm
 TRIM: TR-11108-EB -HC-NT

D-11100
 CONDENSATE POT
 SIZE: 600 mm ID X 1500 mm T-T
 CAPACITY:
 DP/DT: 50.0 kgf/cm²/340.00 °C
 MATERIAL: 316 S.S.
 INSULATION/THK: HC-NT 101.6 mm
 TRIM: TR-11103-AA -HC-NT



- NOTES:**
- This drawing was prepared for MIMOSA to support the OGI Pilot, see the www.MIMOSA.org site for details, stakeholders can register, participate and access the OGI Pilot data from this location.
 - For P&ID Legend Symbols and General Notes see drawings:
 00-001 - ABBREVIATIONS, LINE SERVICES, MISCELLANEOUS
 00-002 - EQUIPMENT SYMBOLS
 00-003 - PIPING SYMBOLS
 00-004 - INSTRUMENT LETTER DEFINITION CHART
 00-005 - INSTRUMENT SYMBOLS SHEET 1
 00-006 - INSTRUMENT SYMBOLS SHEET 2
 - For sample P&ID ISO 15926 data see the corresponding .XML file(s) for this drawing.

REV	DATE	DESCRIPTION	BY	CHK	ENG	PEM	FW
B	12-Sept-12	ADDED PROCESS DATA					
A	22-Aug-12	ISSUE FOR REVIEW					



CLIENT/PROJECT TITLE
**WORLEYPARSONS
 MIMOSA OGI Pilot - Phase 1**

PROJECT NO.
**PIPING AND INSTRUMENT DIAGRAM
 DEBUTANIZER**

SCALE
NONE

DWG. NO.
11-001

REVISION
A

NOTE: THIS DRAWING AND THE DATA CONTAINED HEREIN ARE OF A CONFIDENTIAL NATURE AND SHALL BE KEPT AS SUCH. NO PART OF THIS DRAWING OR THE DATA CONTAINED HEREIN SHALL BE REPRODUCED OR TRANSMITTED IN ANY FORM OR BY ANY MEANS, ELECTRONIC OR MECHANICAL, INCLUDING PHOTOCOPYING, RECORDING, OR BY ANY INFORMATION STORAGE AND RETRIEVAL SYSTEM, WITHOUT THE WRITTEN PERMISSION OF THE DRAWING OWNER.

