

## Diagram: 01 - Notices

Common Collaborative Object Model (CCOM)

Version 4.0.0-rc1

Last Updated: 2015-03-25

Copyright © MIMOSA 2015. All Rights Reserved.

All capitalized terms in the following text have the meanings assigned to them in the MIMOSA Intellectual Property Rights Policy (the "MIMOSA IPR Policy"). The full Policy may be found at the MIMOSA website.

This document and translations of it may be copied and furnished to others, and derivative works that comment on or otherwise explain it or assist in its implementation may be prepared, copied, published, and distributed, in whole or in part, without restriction of any kind, provided that the above copyright notice and this section are included on all such copies and derivative works. However, this document itself may not be modified in any way, including by removing the copyright notice or references to MIMOSA, except as needed for the purpose of developing any document or deliverable produced by a MIMOSA Technical Committee (in which case the rules applicable to copyrights, as set forth in the MIMOSA IPR Policy, must be followed) or as required to translate it into languages other than English.

The limited permissions granted above are perpetual and will not be revoked by MIMOSA or its successors or assigns.

This document and the information contained herein is provided on an "AS IS" basis and MIMOSA DISCLAIMS ALL WARRANTIES, EXPRESS OR IMPLIED, INCLUDING BUT NOT LIMITED TO ANY WARRANTY THAT THE USE OF THE INFORMATION HEREIN WILL NOT INFRINGE ANY OWNERSHIP RIGHTS OR ANY IMPLIED WARRANTIES OF MERCHANTABILITY OR FITNESS FOR A PARTICULAR PURPOSE.

MIMOSA requests that any MIMOSA Party or any other party that believes it has patent claims that would necessarily be infringed by implementations of this MIMOSA Final Deliverable, to notify MIMOSA TC Administrator and provide an indication of its willingness to grant patent licenses to such patent claims in a manner consistent with the IPR Mode of the MIMOSA Technical Committee that produced this deliverable.

MIMOSA invites any party to contact the MIMOSA TC Administrator if it is aware of a claim of ownership of any patent claims that would necessarily be infringed by implementations of this MIMOSA Final Deliverable by a patent holder that is not willing to provide a license to such patent claims in a manner consistent with the IPR Mode of the MIMOSA Technical Committee that produced this MIMOSA Final Deliverable. MIMOSA may include such claims on its website, but disclaims any obligation to do so.

MIMOSA takes no position regarding the validity or scope of any intellectual property or other rights that might be claimed to pertain to the implementation or use of the technology described in this MIMOSA Final Deliverable or the extent to which any license under such rights might or might not be available; neither does it represent that it has made any effort to identify any such rights. Information on MIMOSA's procedures with respect to rights in any document or deliverable produced by a MIMOSA Technical Committee can be found on the MIMOSA website.

Copies of claims of rights made available for publication and any assurances of licenses to be made available, or the result of an attempt made to obtain a general license or permission for the use of such proprietary rights by implementers or users of this MIMOSA Final Deliverable, can be obtained from the MIMOSA TC Administrator. MIMOSA makes no representation that any information or list of intellectual property rights will at any time be complete, or that any claims in such list are, in fact, Essential Claims.

**Diagram: 02 - Core Types**

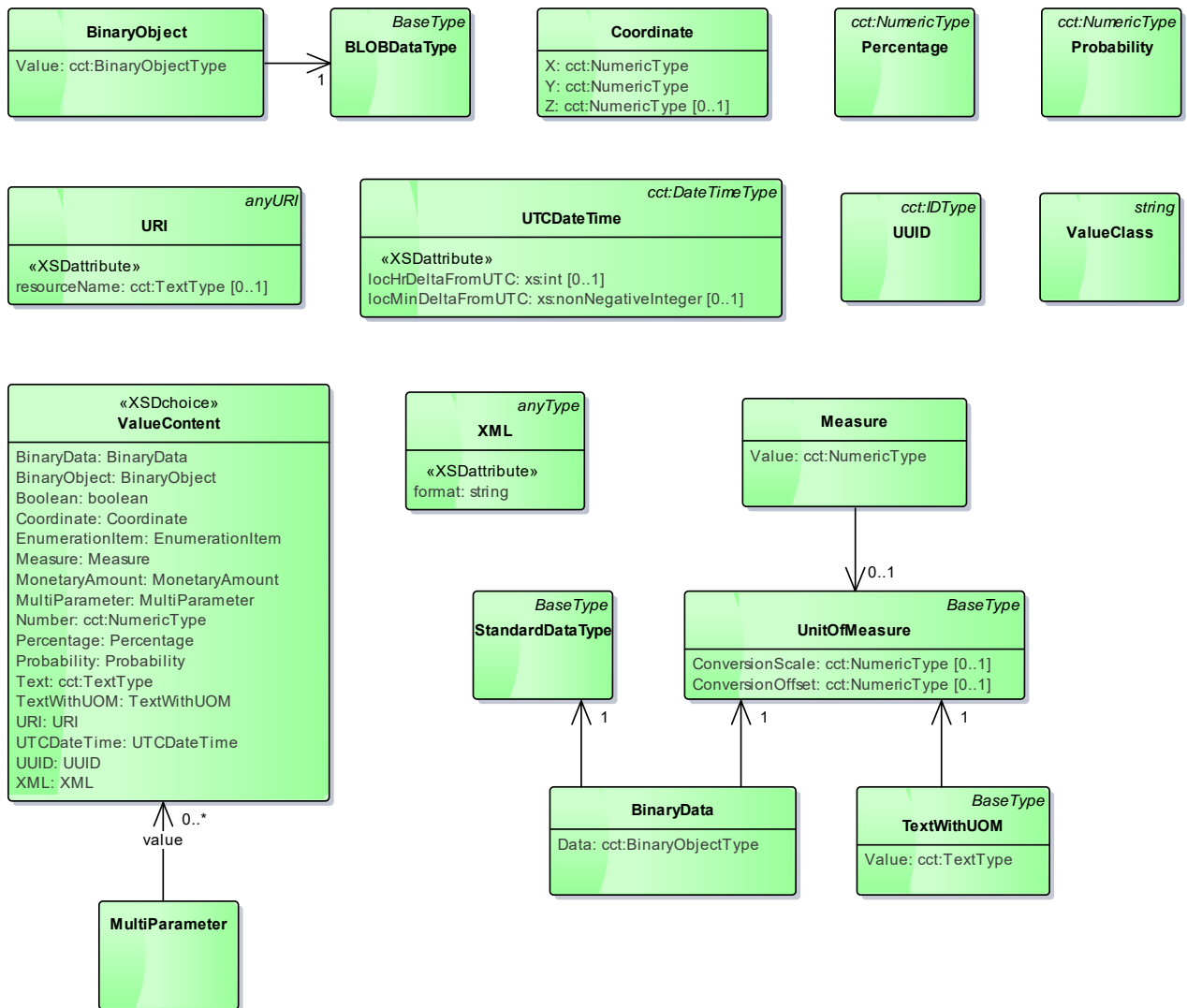
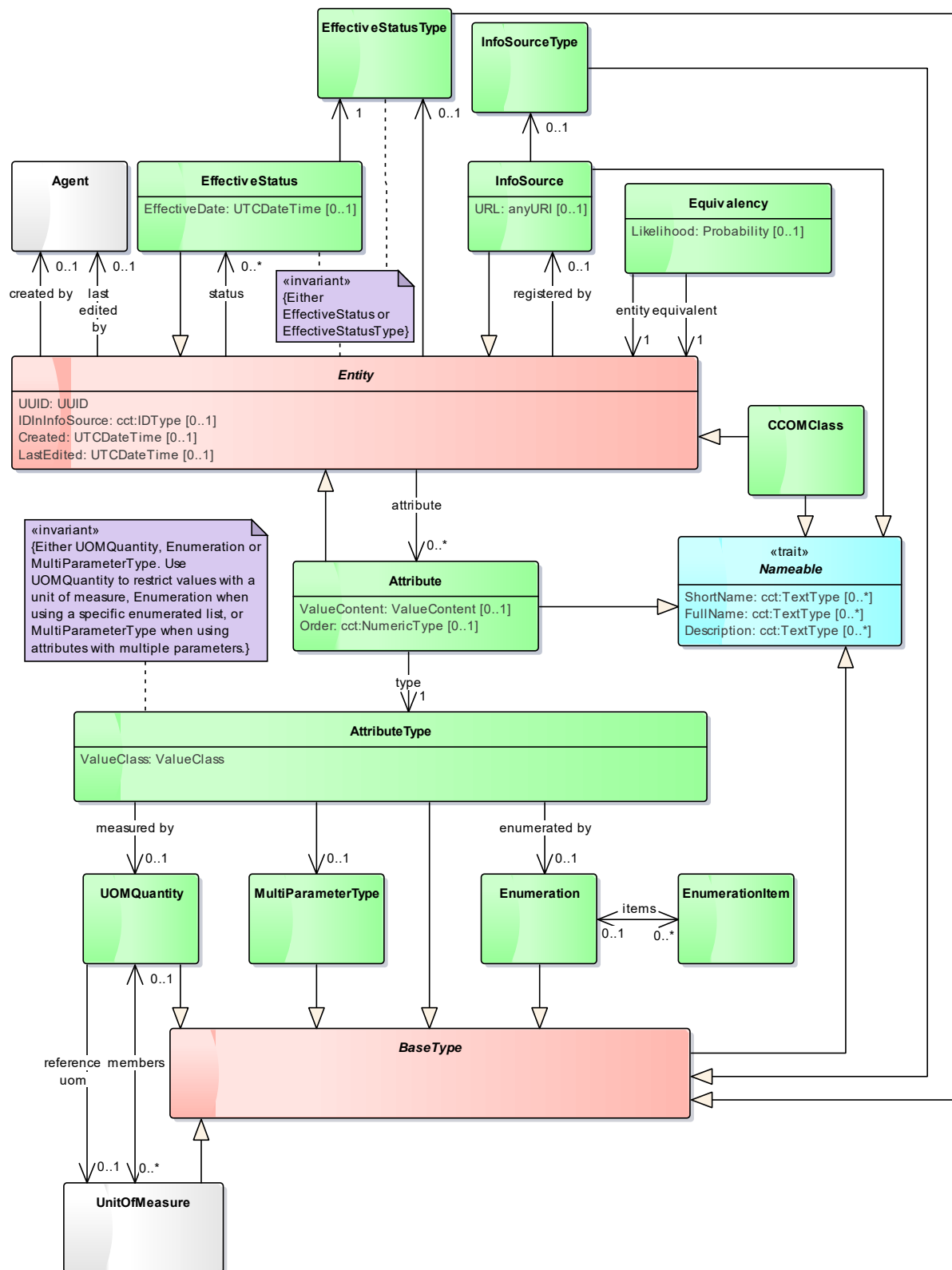
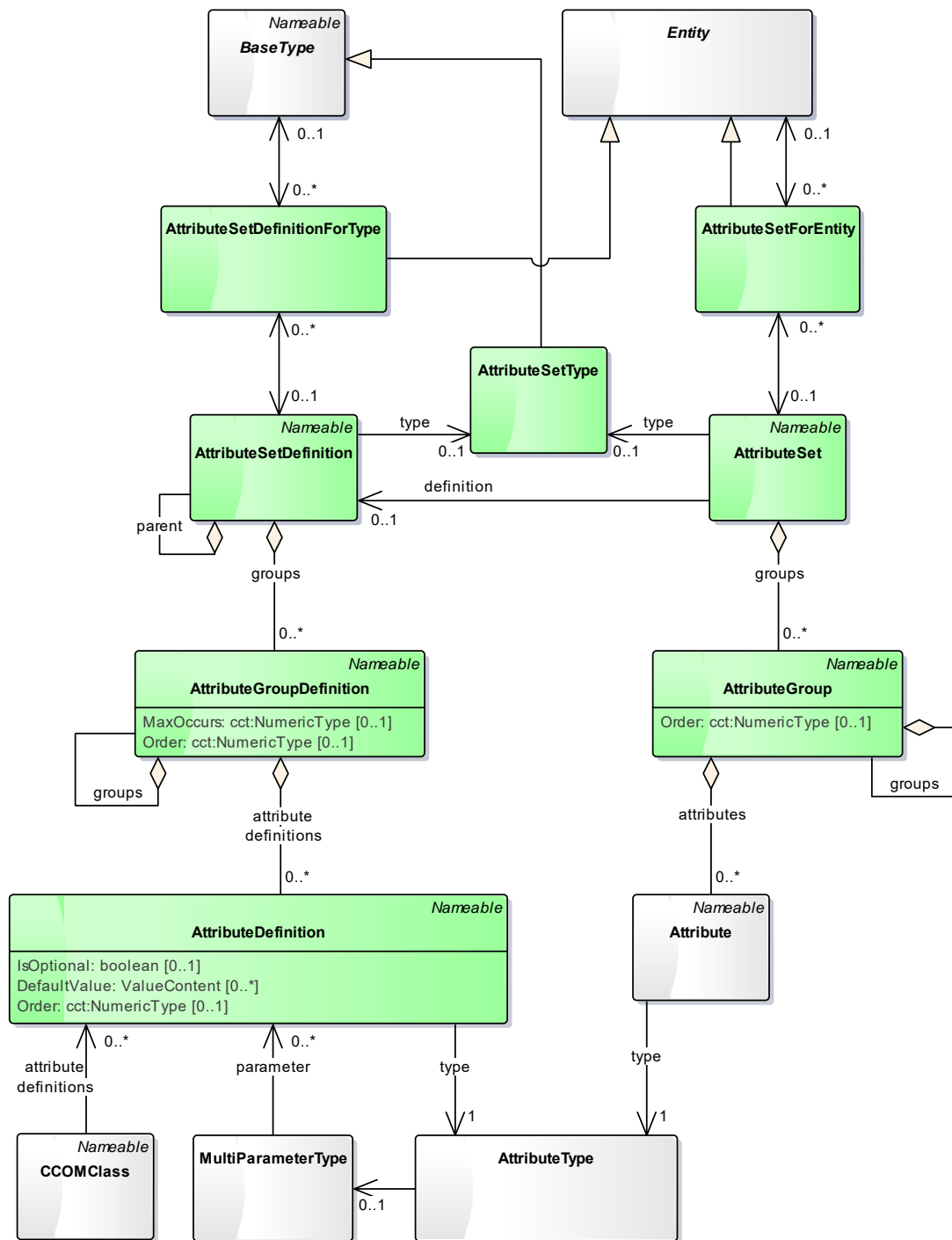


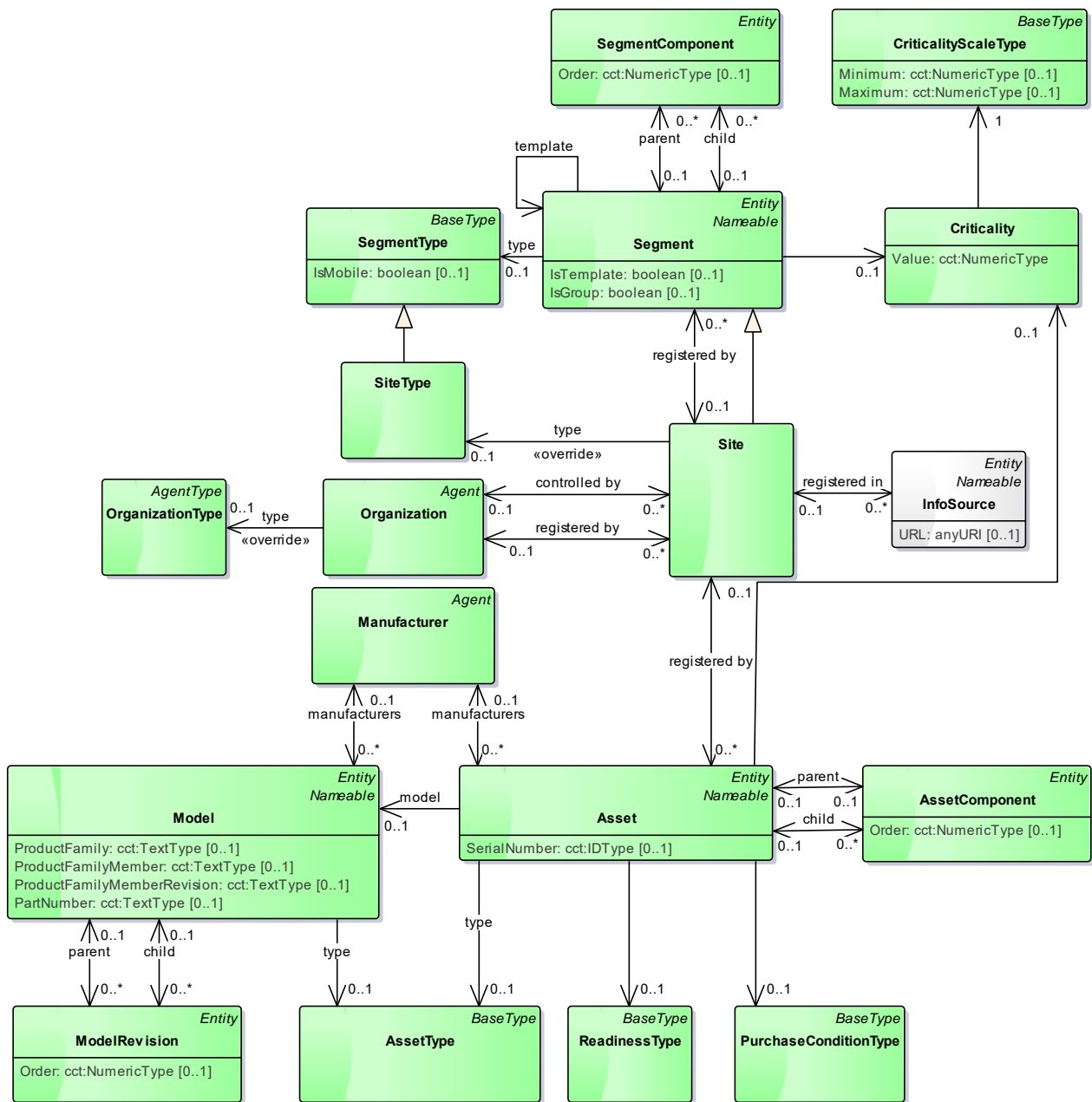
Diagram: 03 - Core



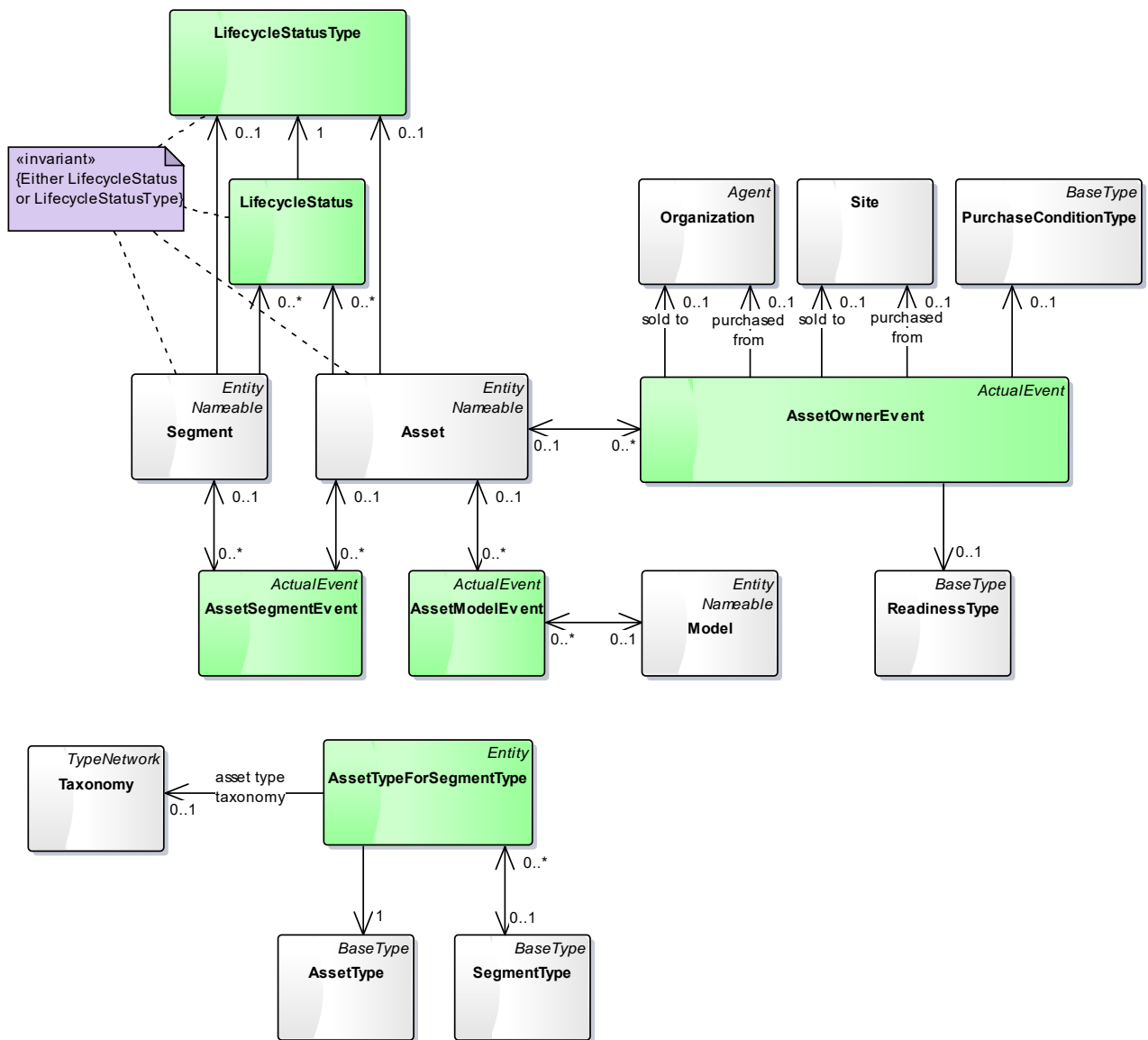
### Diagram: 04 - Attribute Sets



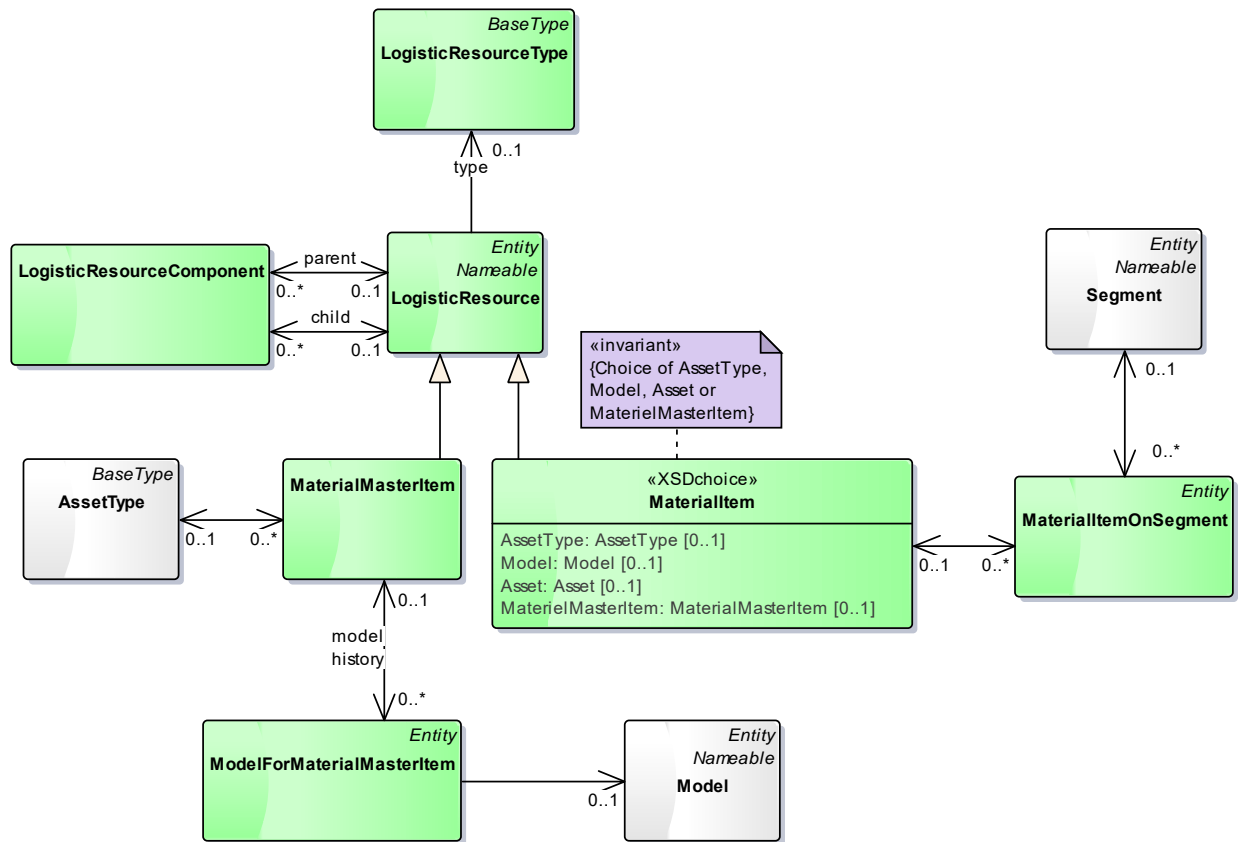
### Diagram: 05 - Registry



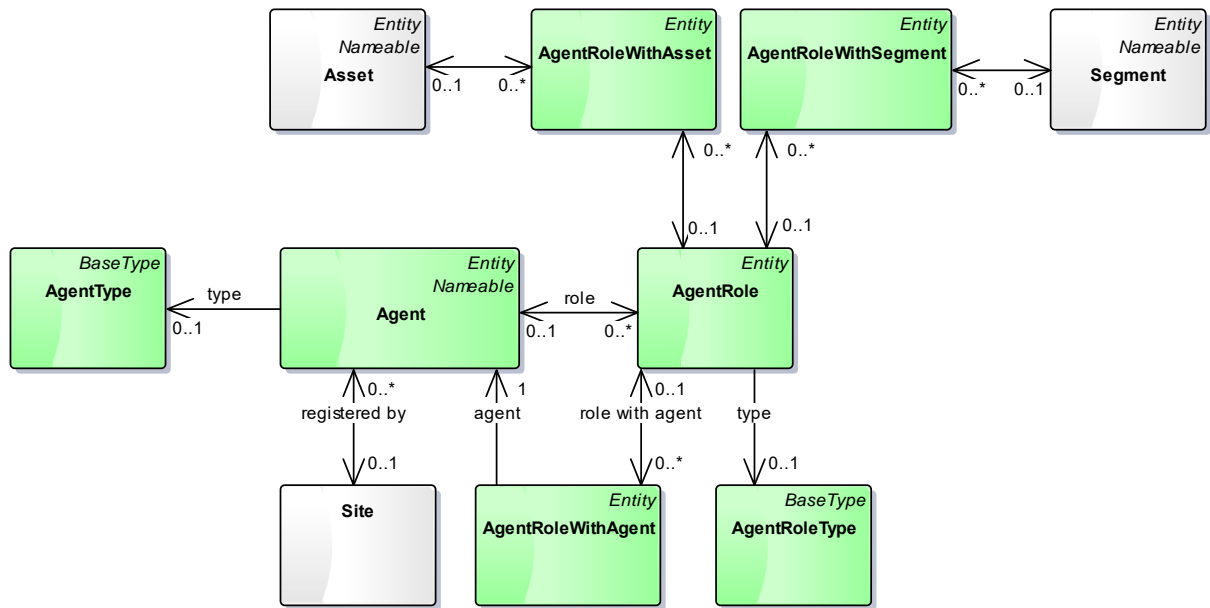
**Diagram: 06 - Registry Configuration**



**Diagram: 07 - Logistic Resources**

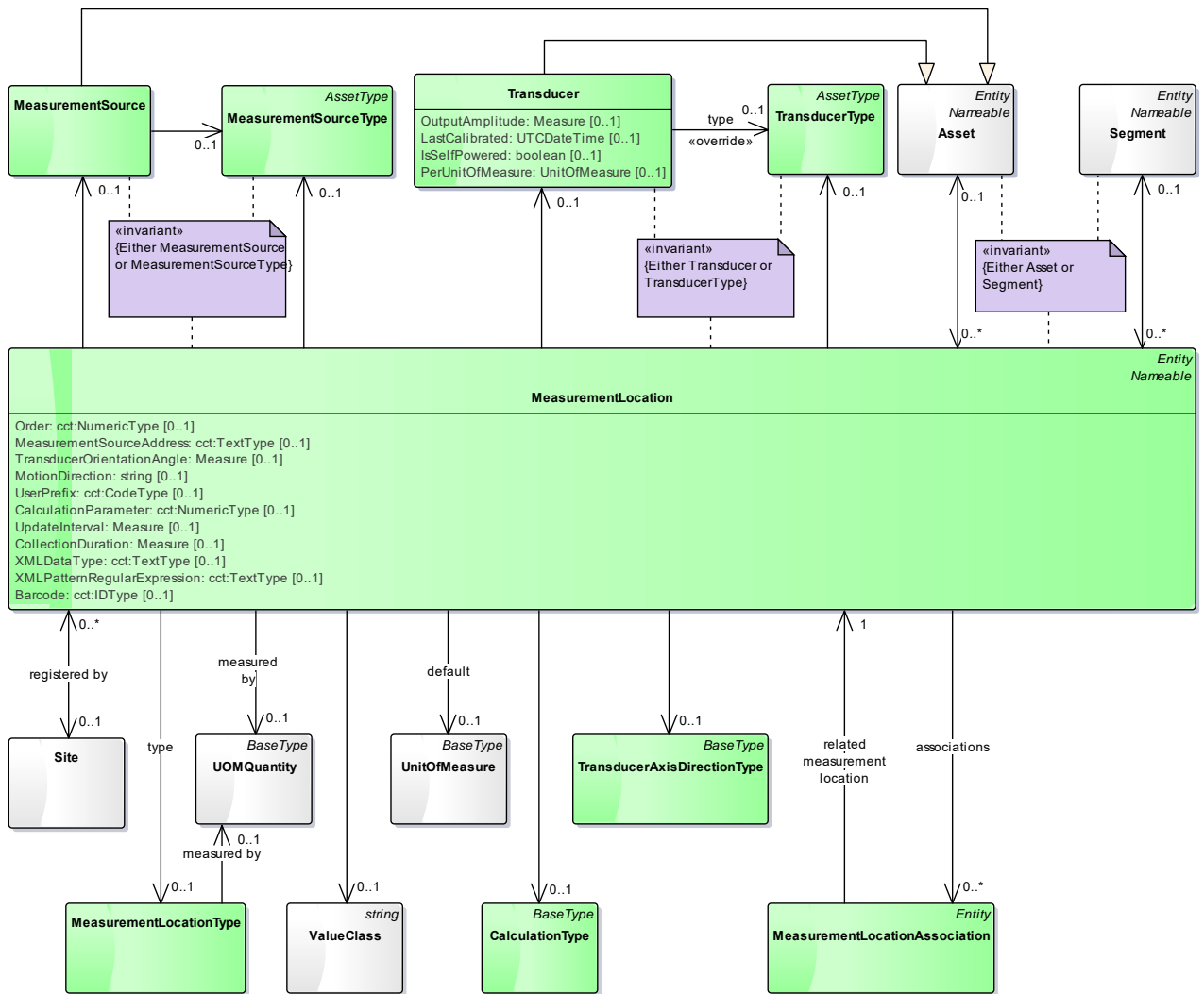


**Diagram: 08 - Agents**

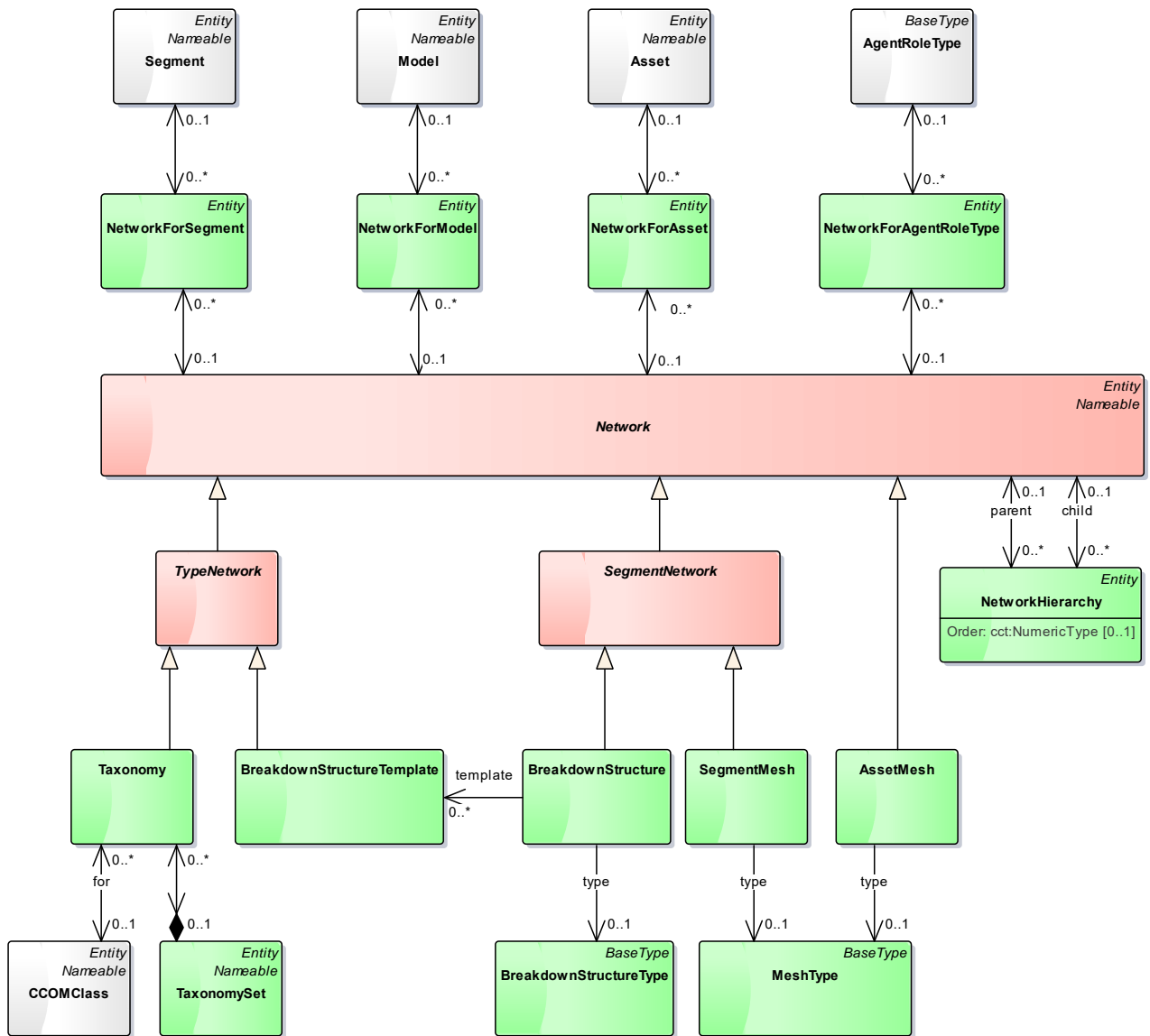




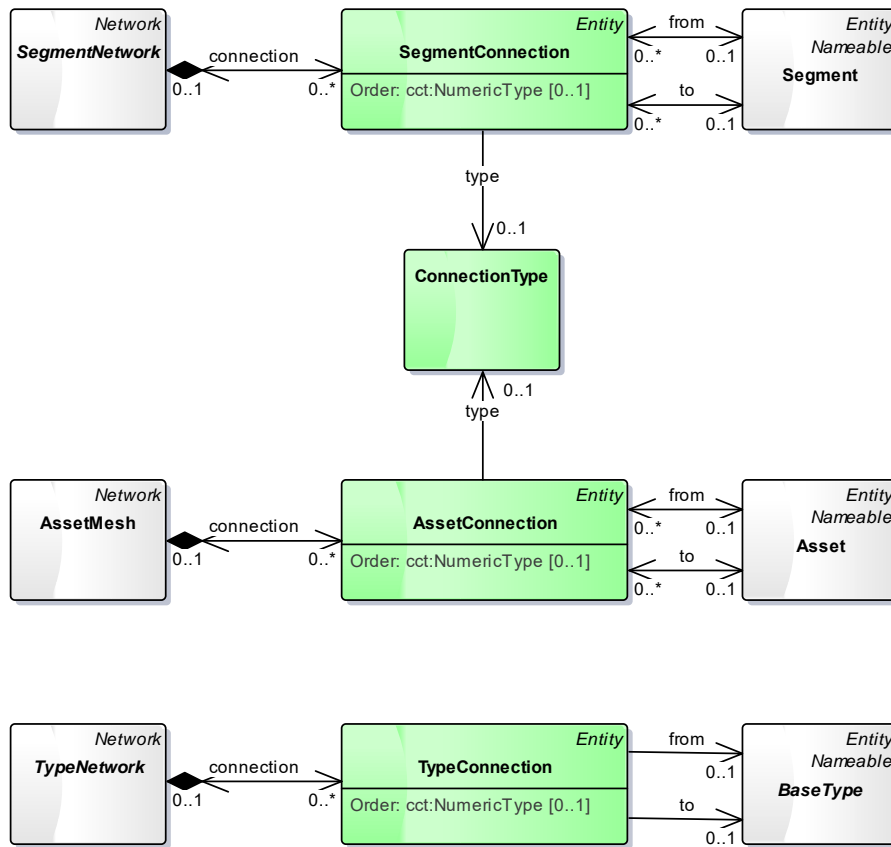
**Diagram: 09 - Measurement Locations**



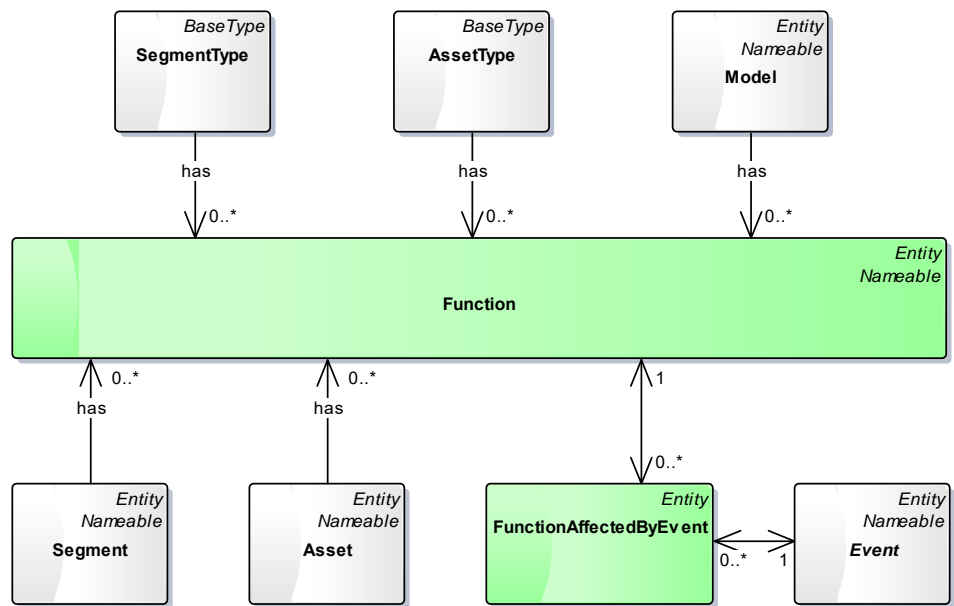
**Diagram: 10 - Networks**



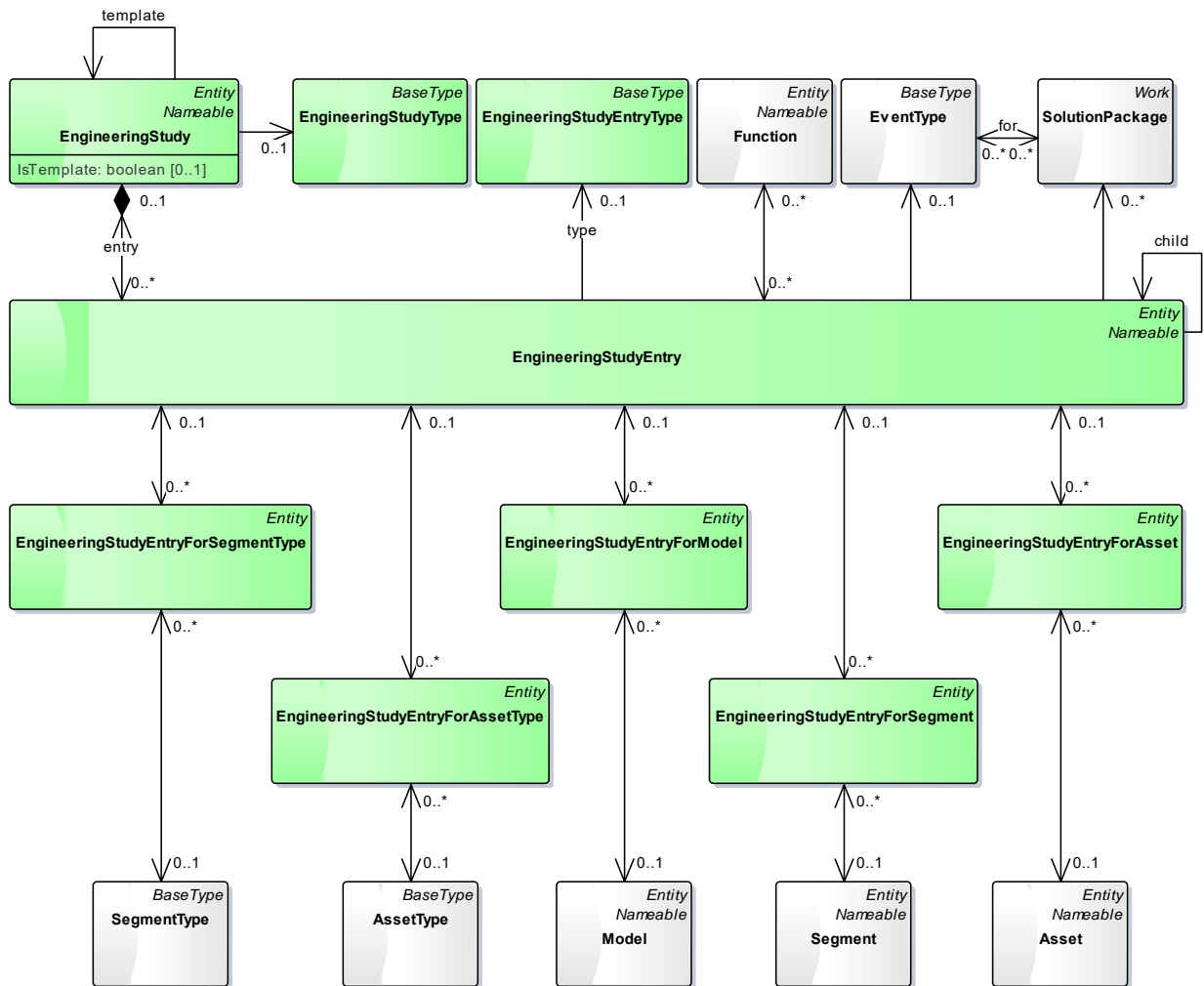
**Diagram: 11 - Network Connections**



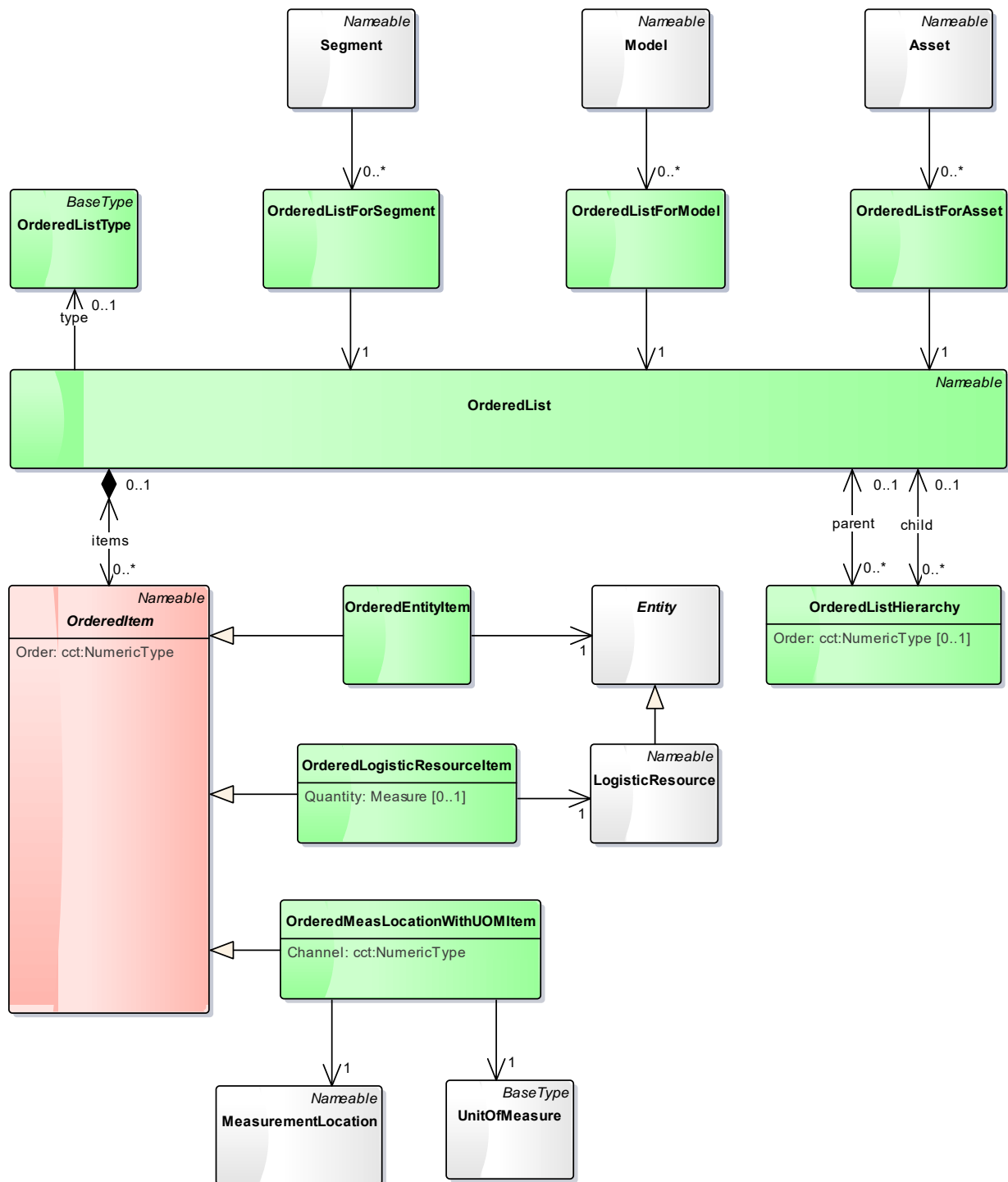
**Diagram: 12 - Functions**



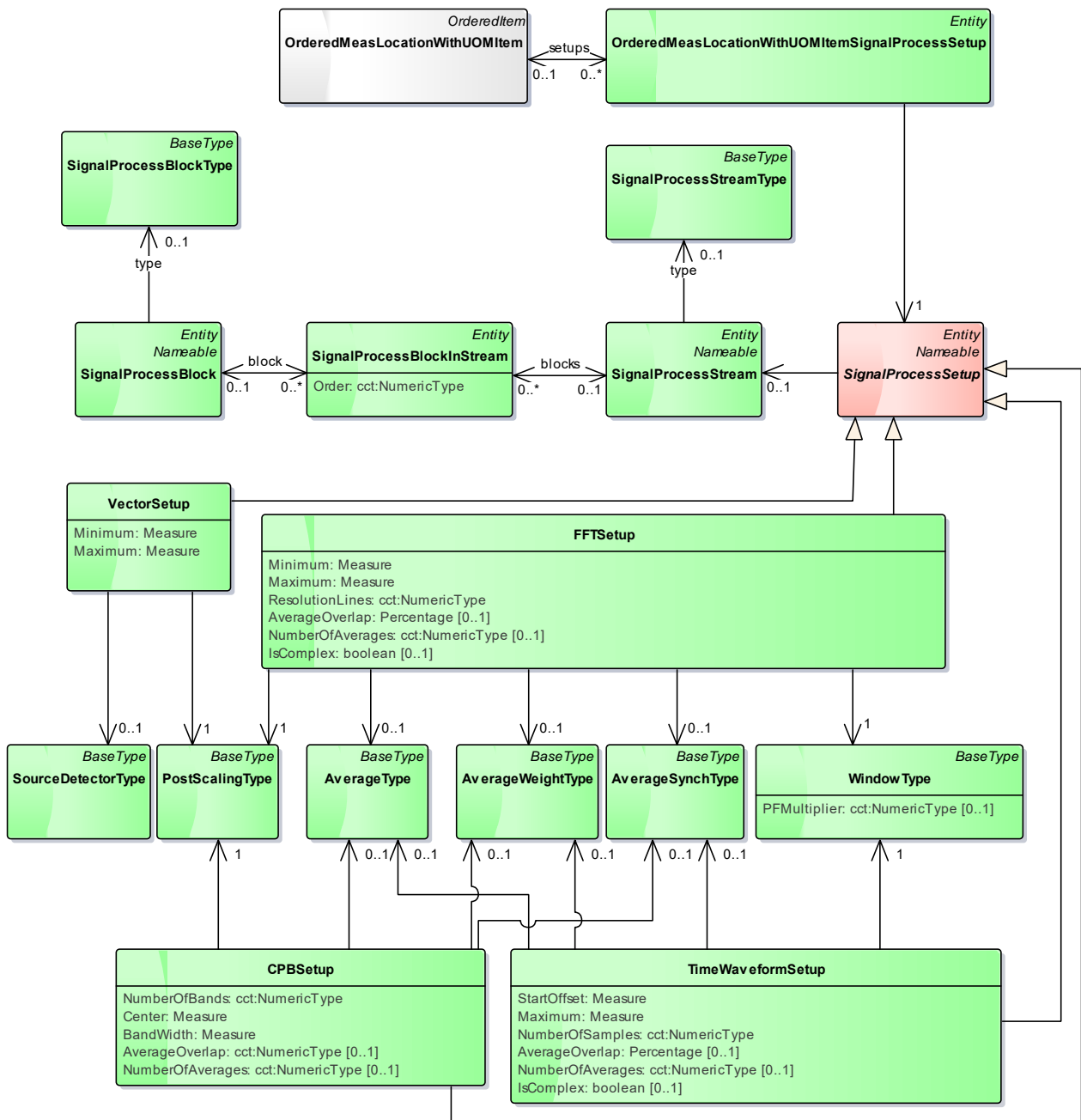
**Diagram: 13 - Engineering Studies**



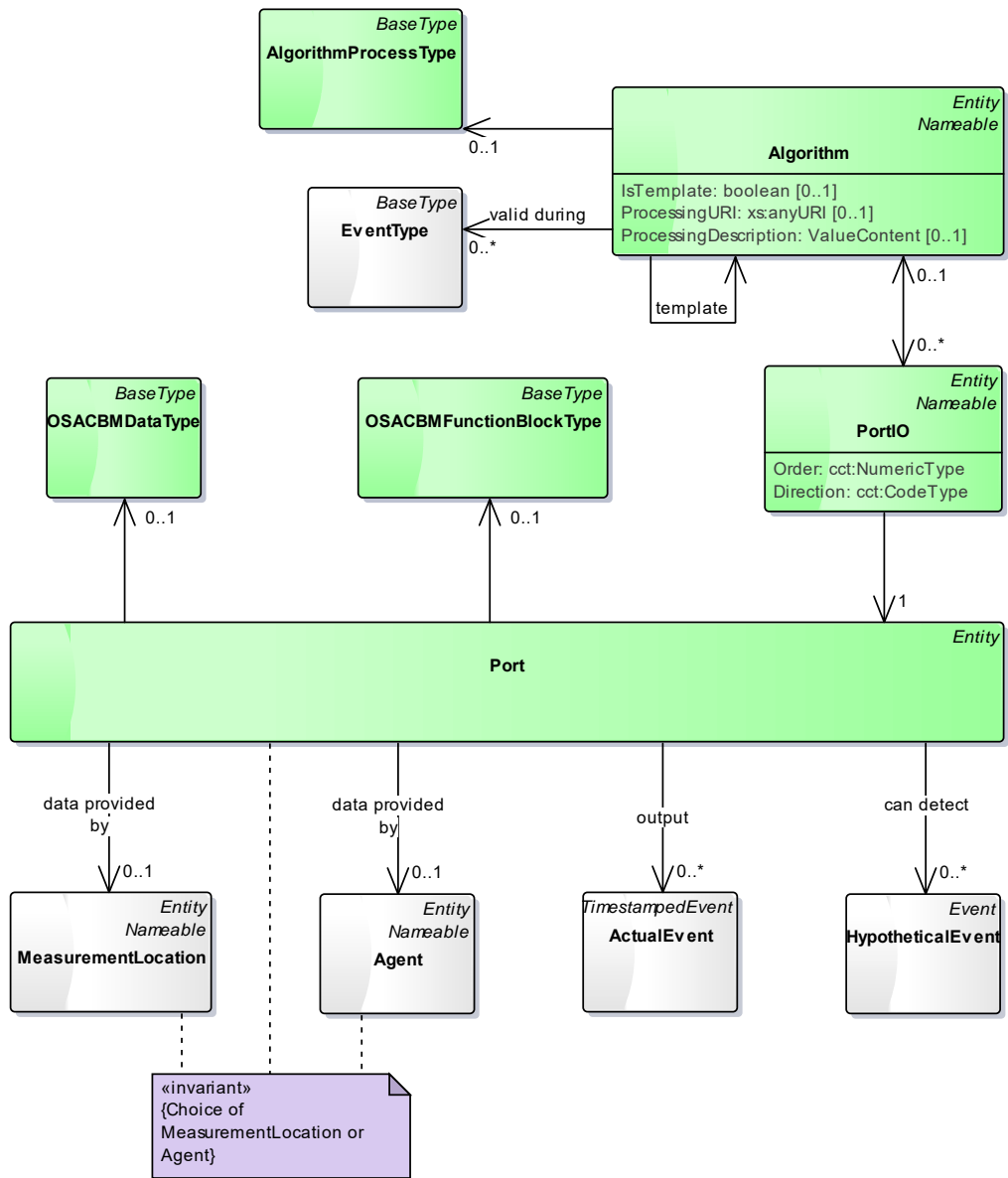
**Diagram: 14 - Ordered Lists**



**Diagram: 15 - Signal Processing Setups**

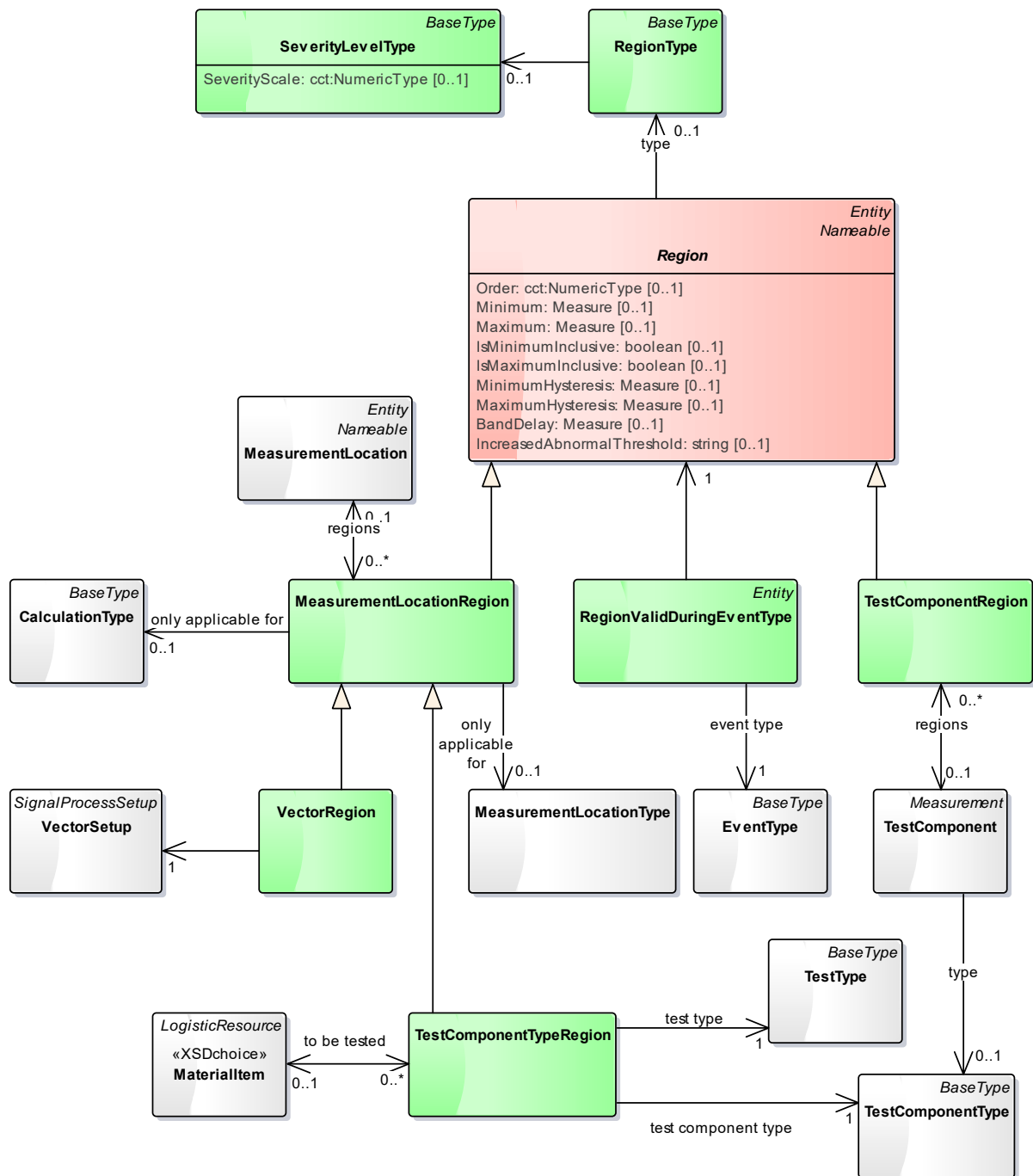


**Diagram: 16 - Algorithms**

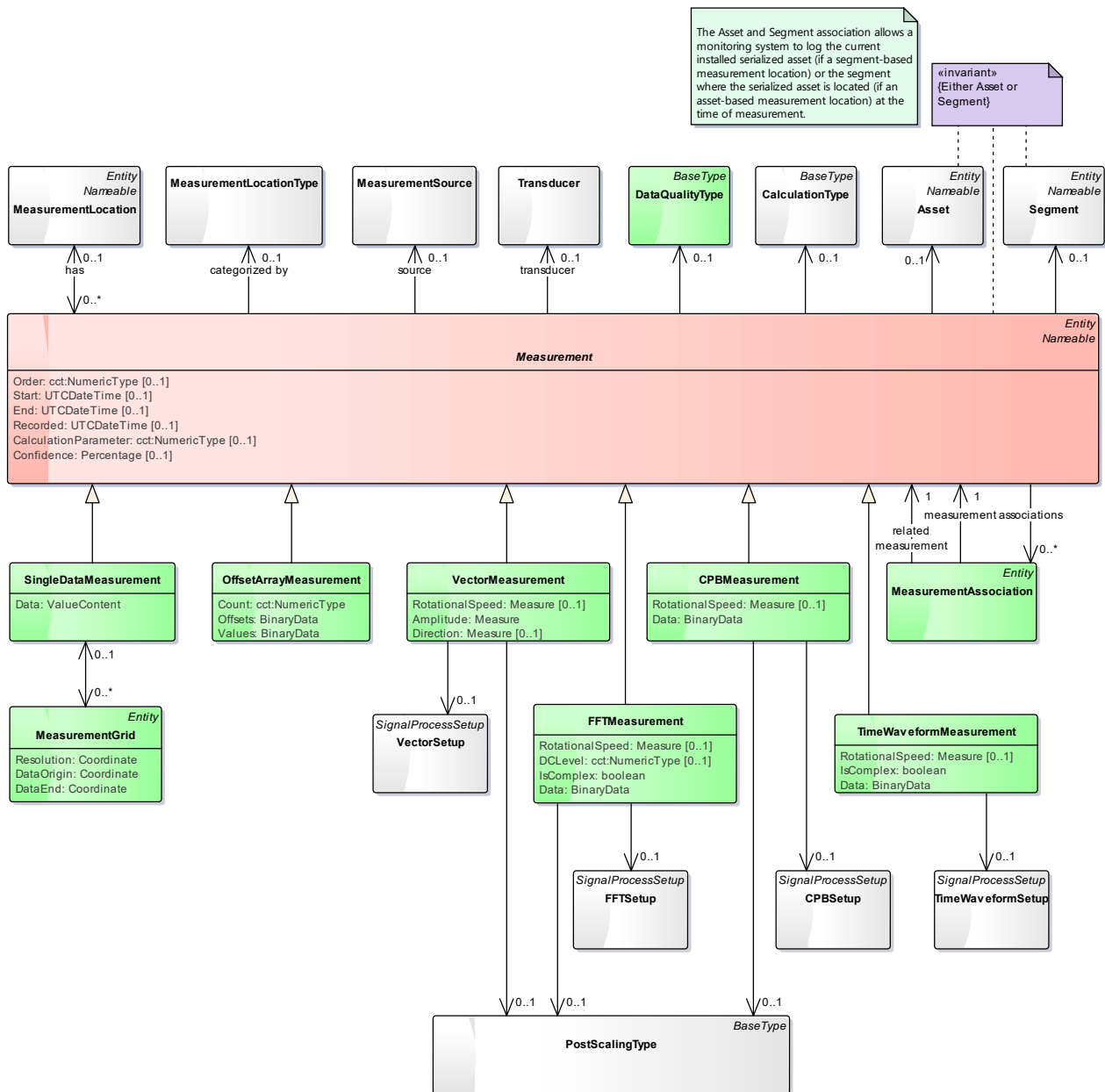




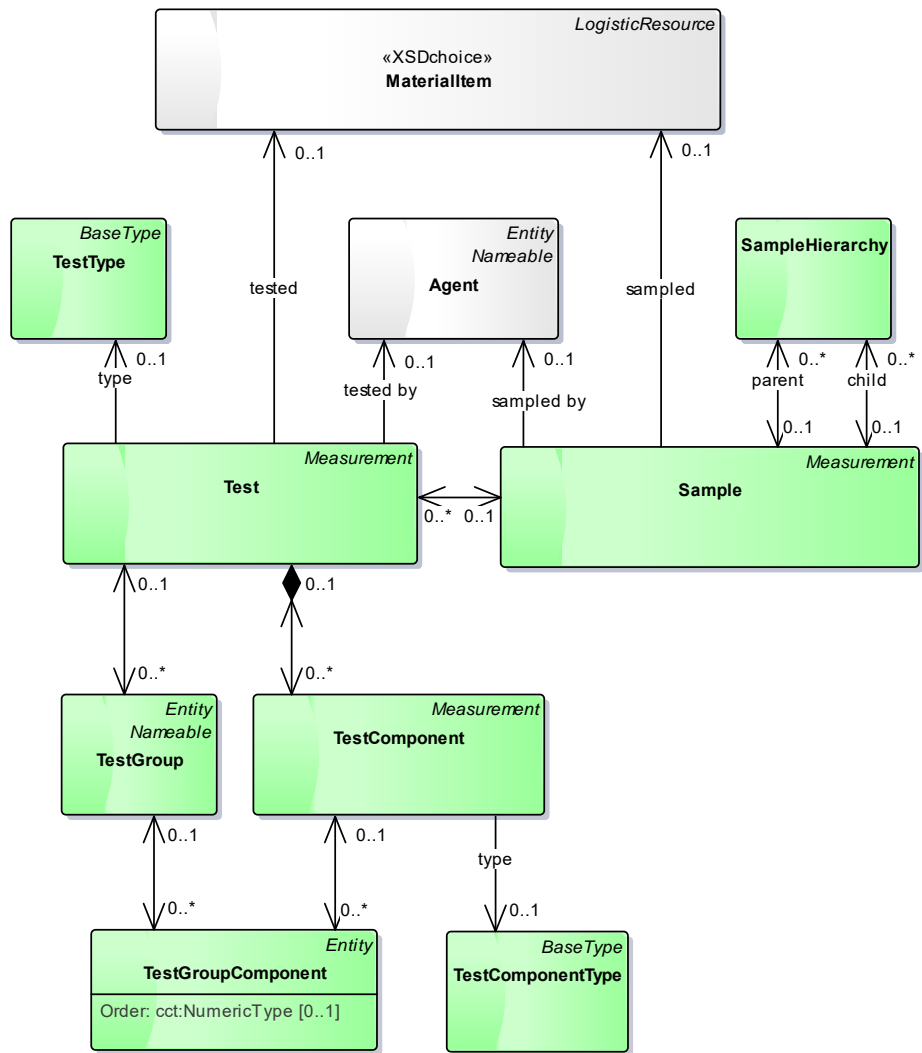
**Diagram: 17 - State Regions**



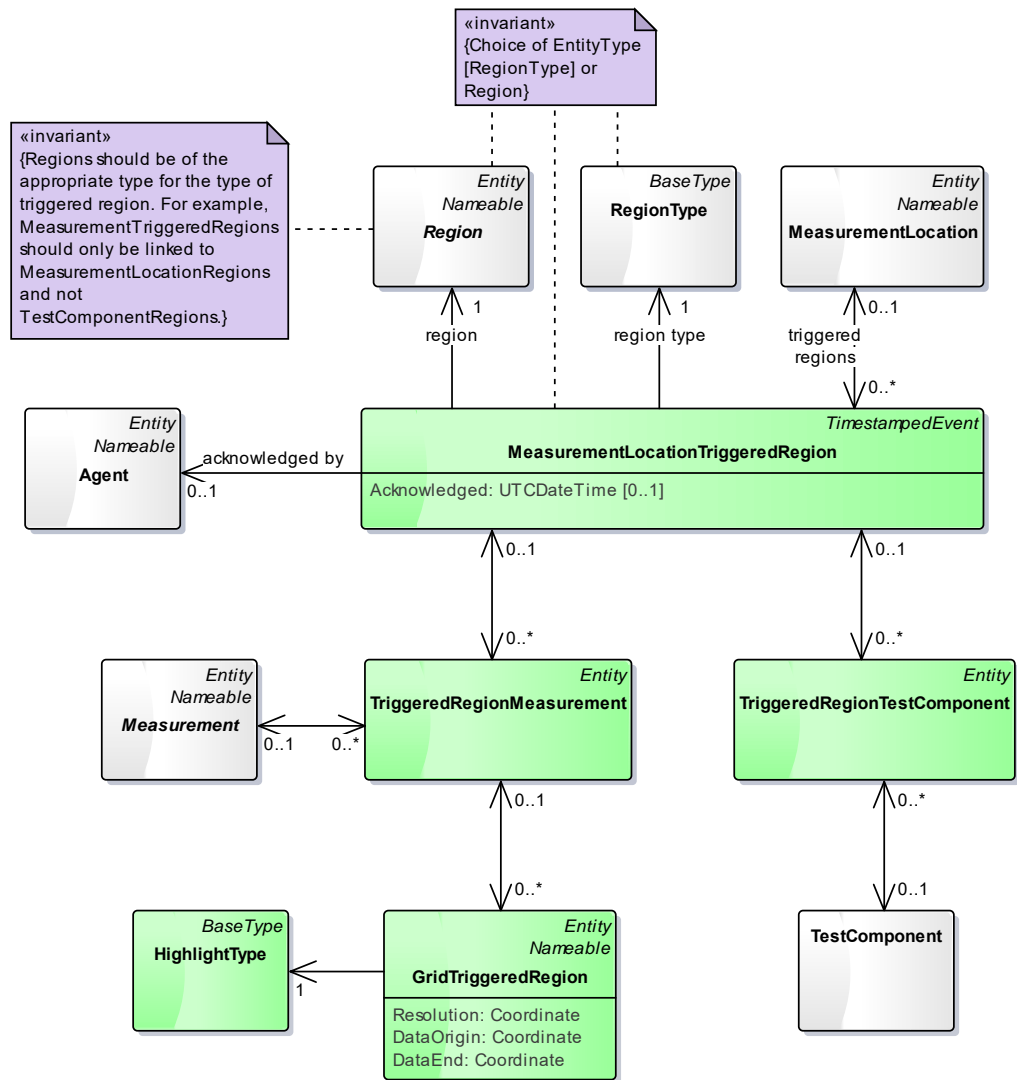
**Diagram: 18 - Measurements**



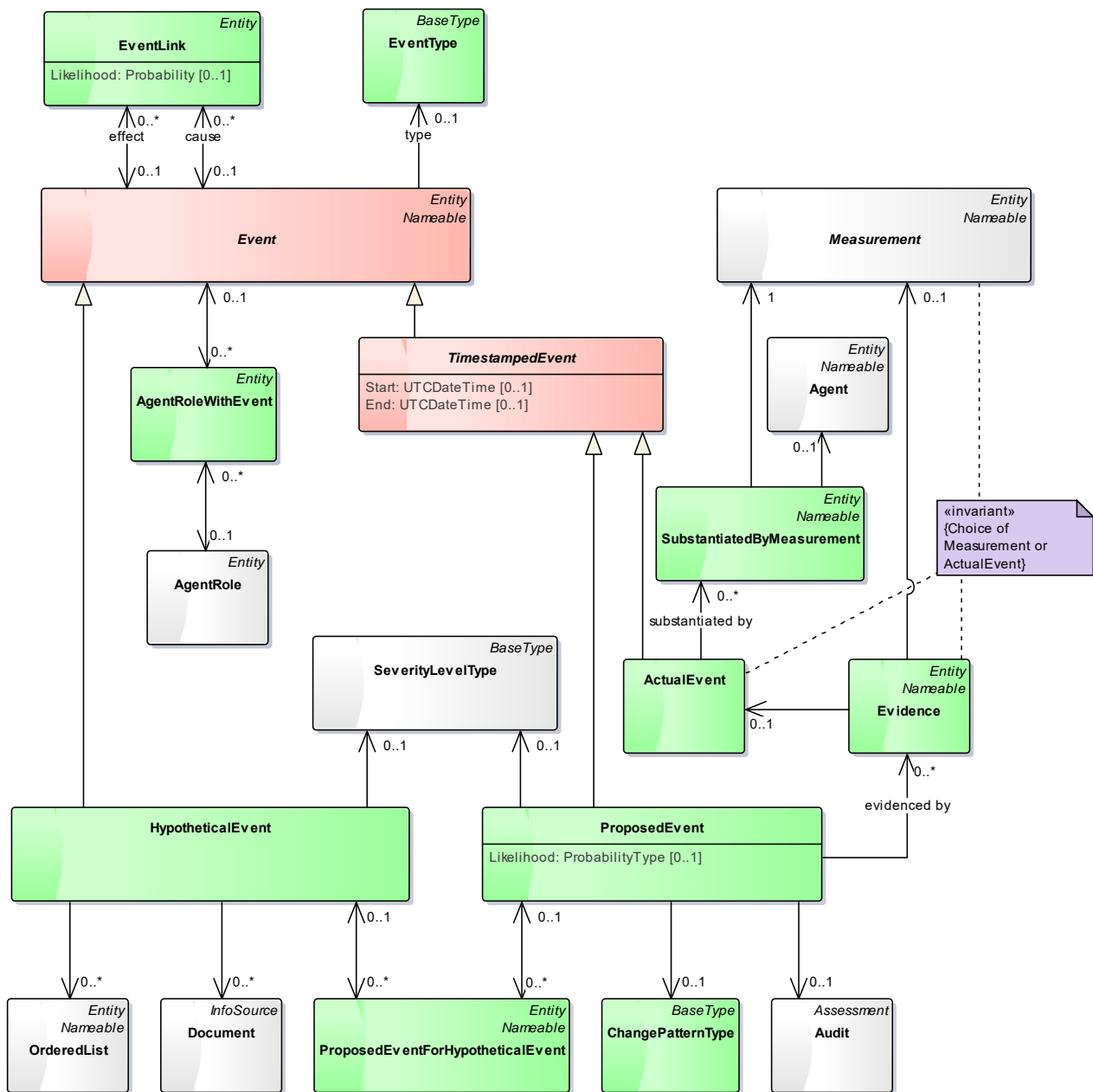
**Diagram: 19 - Tests**



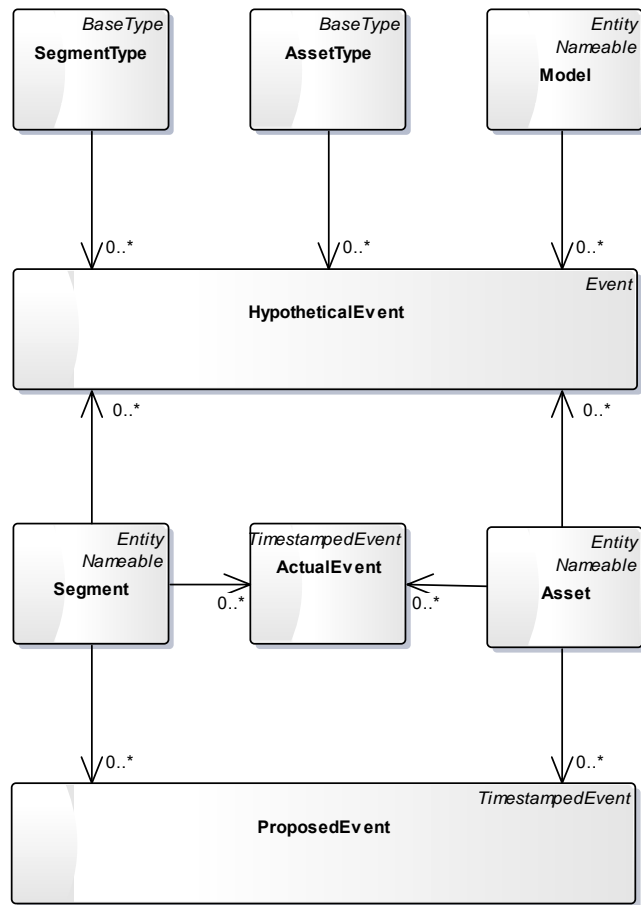
**Diagram: 20 - Triggered State Regions**



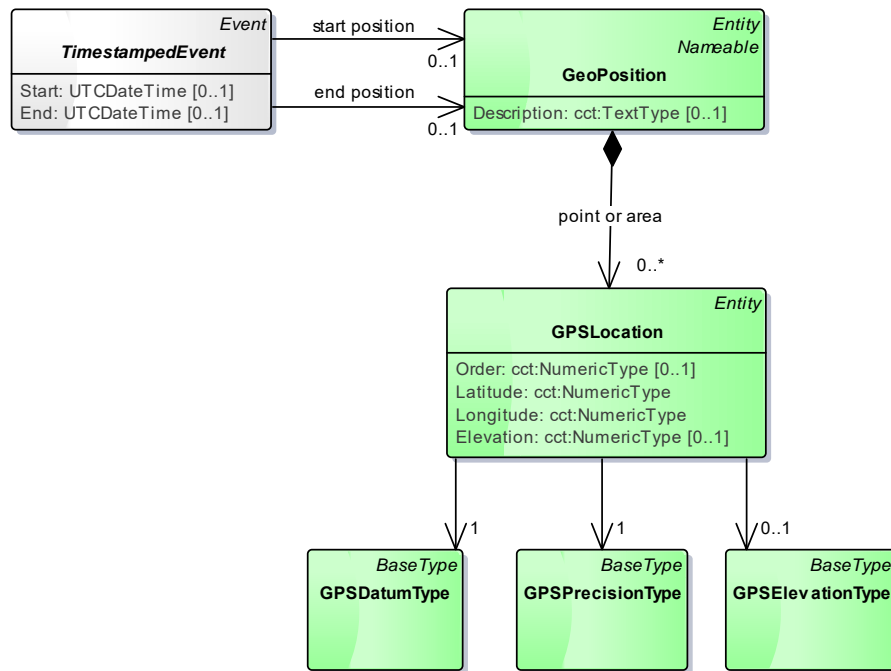
**Diagram: 21 - Events**



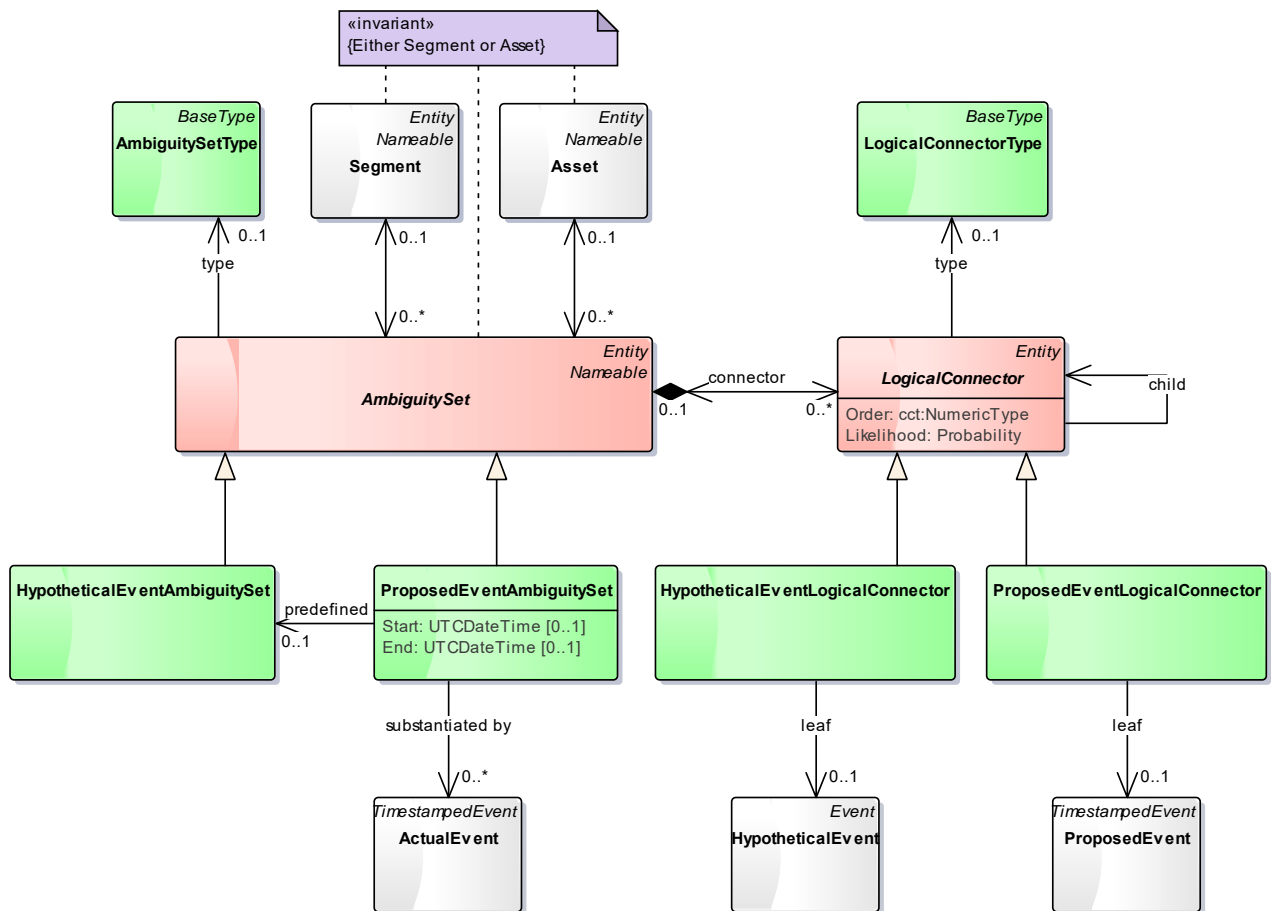
**Diagram: 22 - Event Relationships**



**Diagram: 23 - Geospatial Tracking**

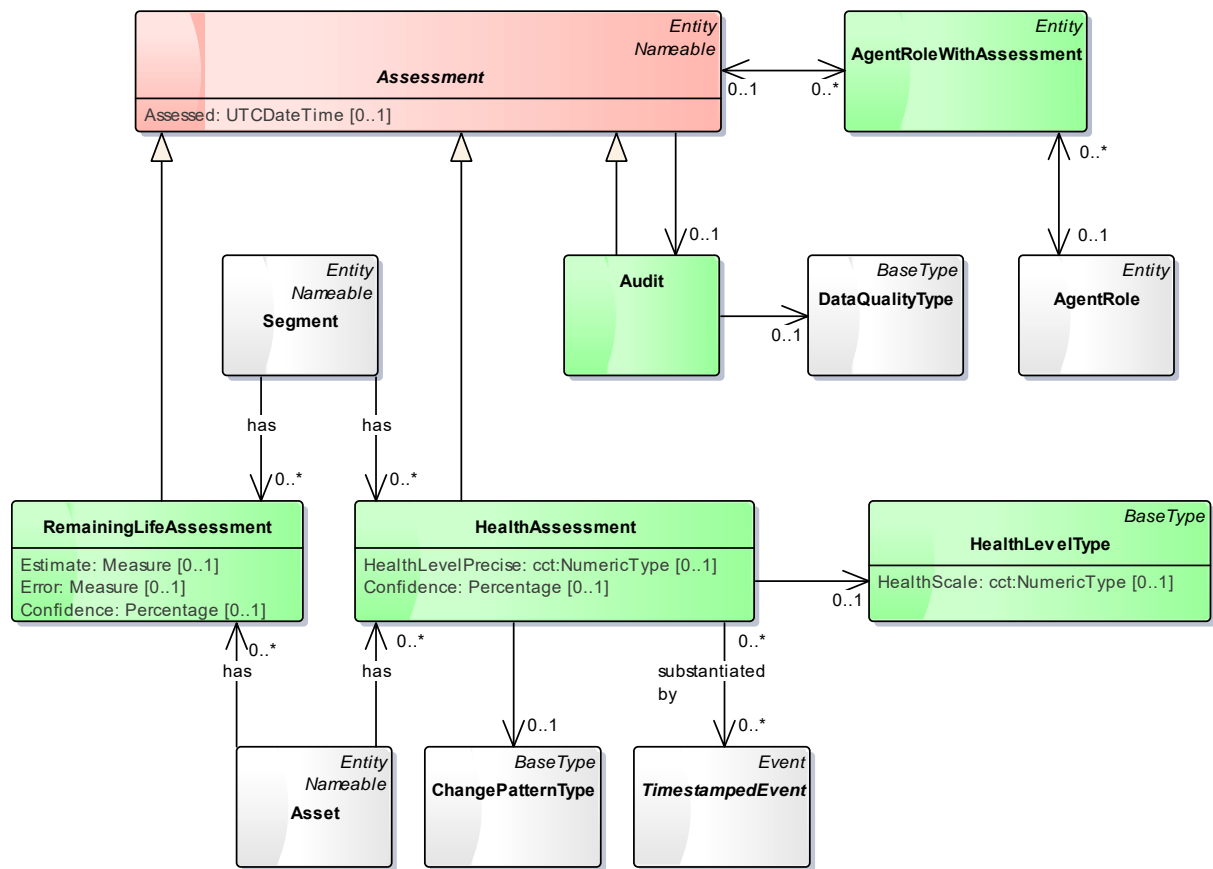


**Diagram: 24 - Ambiguity Sets**

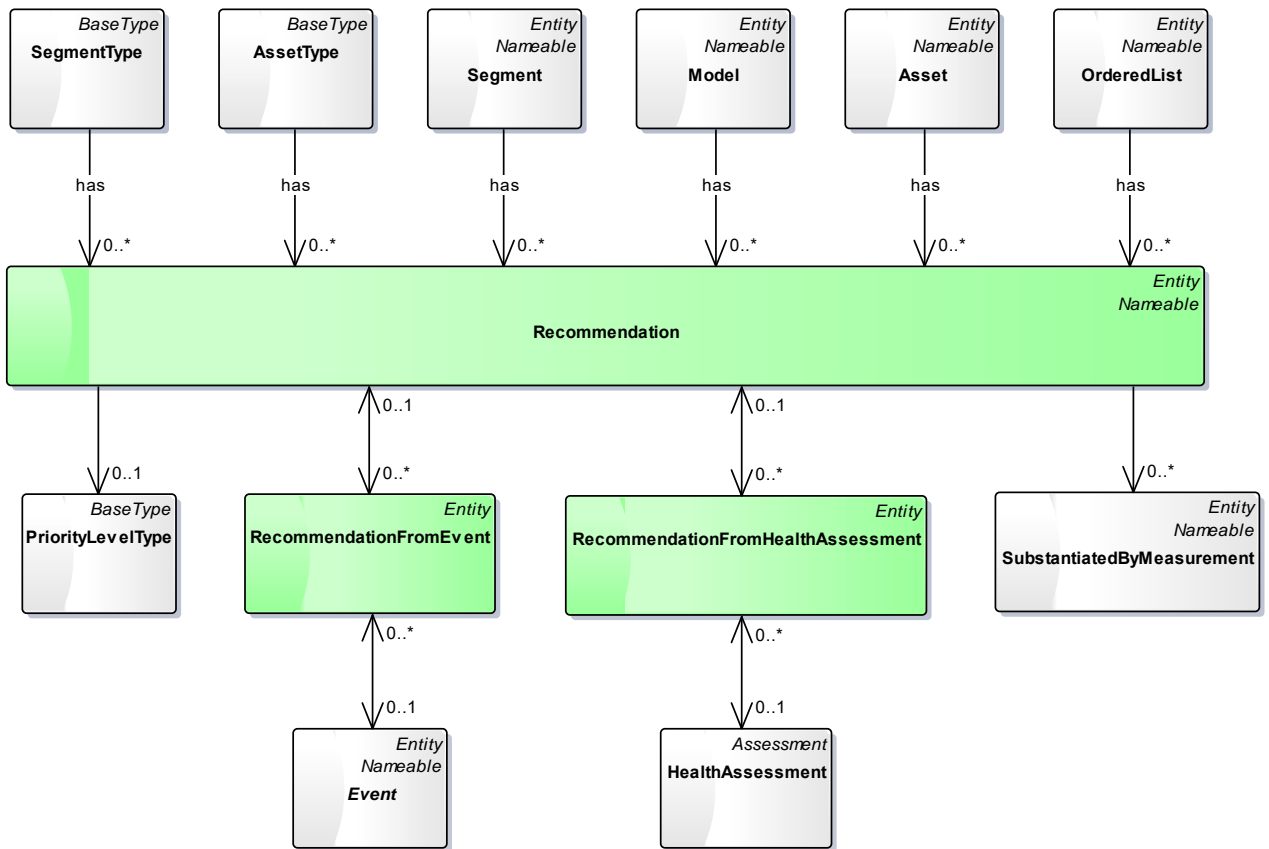




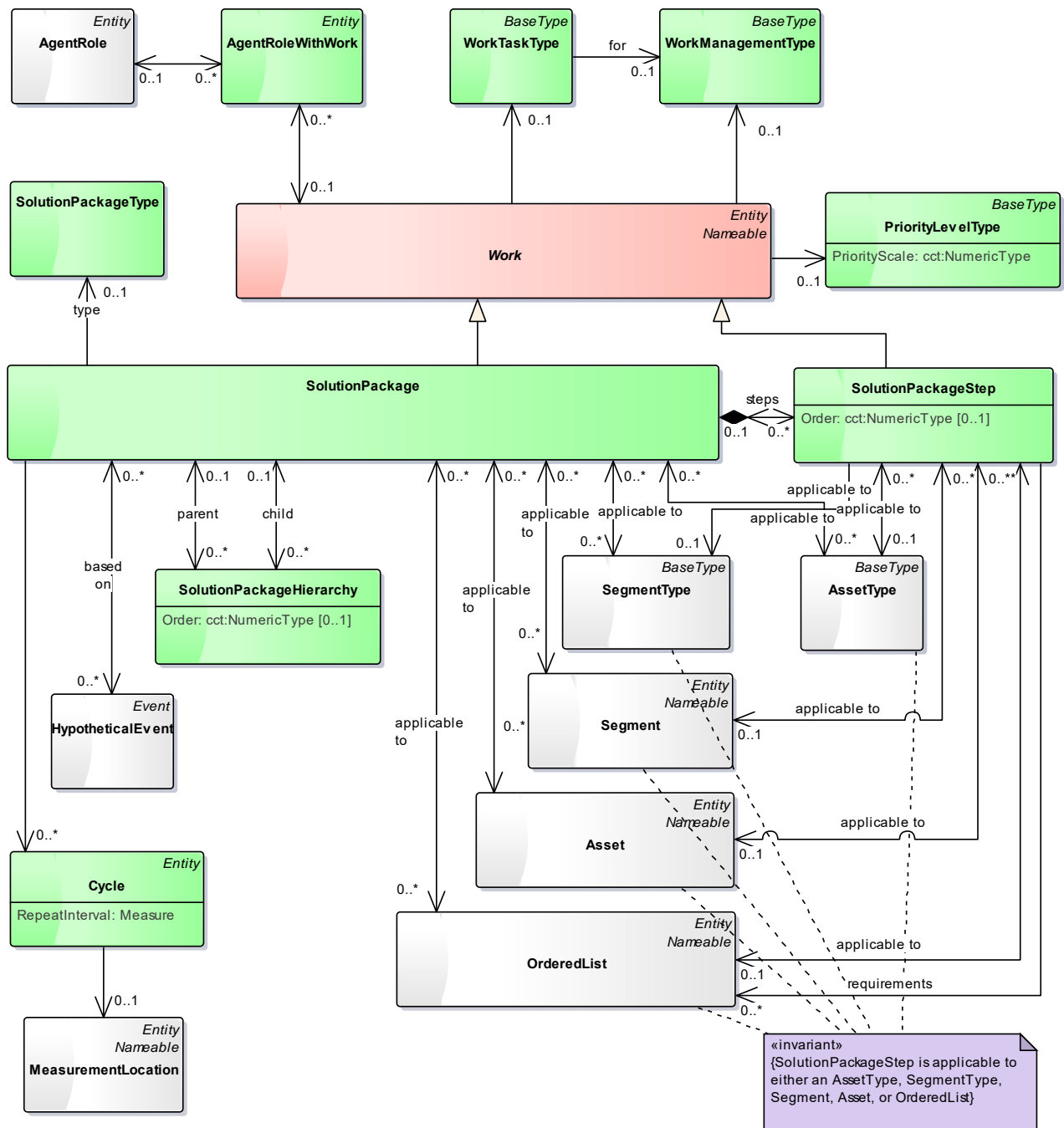
**Diagram: 25 - Health and Prognostic Assessments**



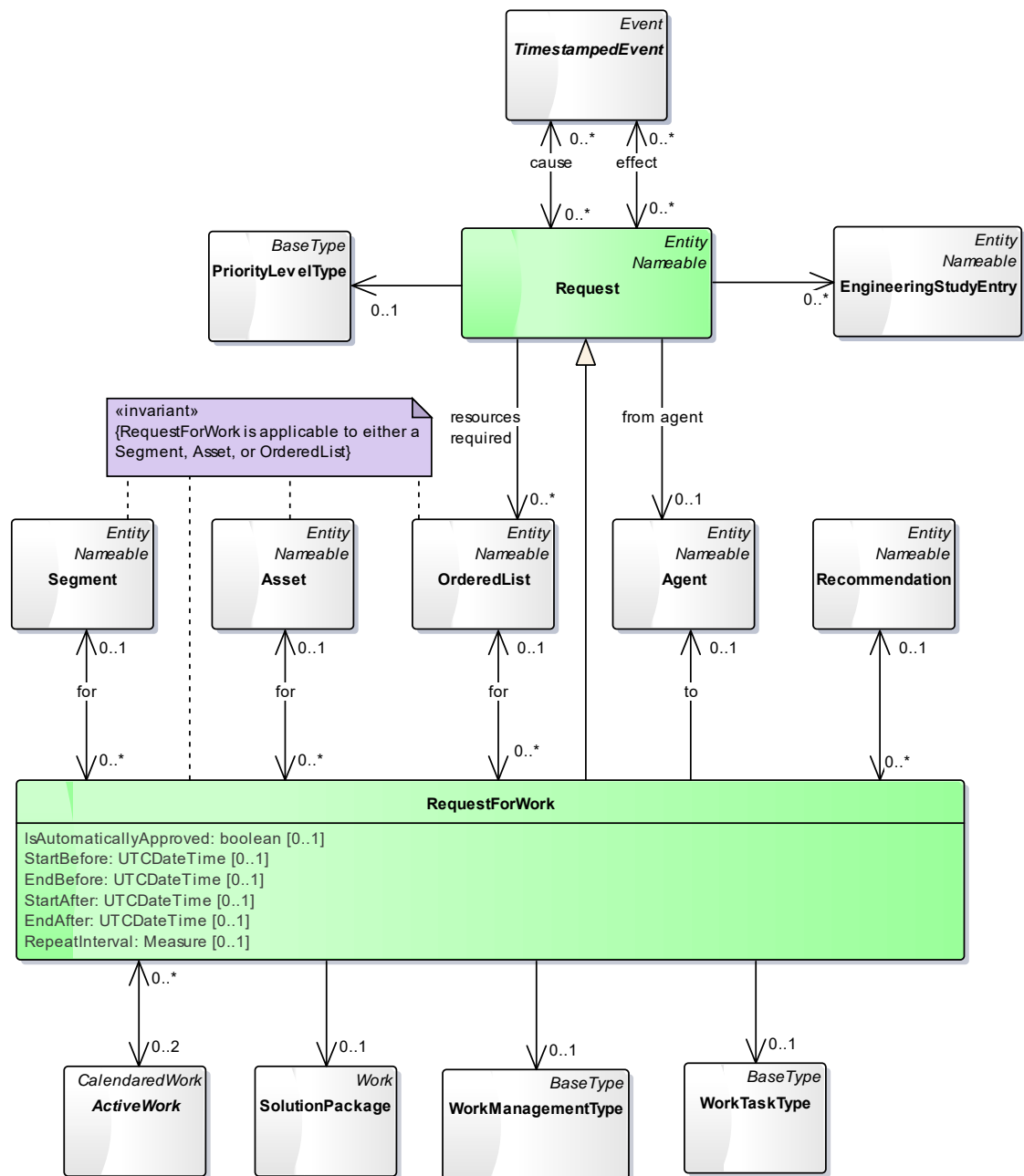
**Diagram: 26 - Recommendations**



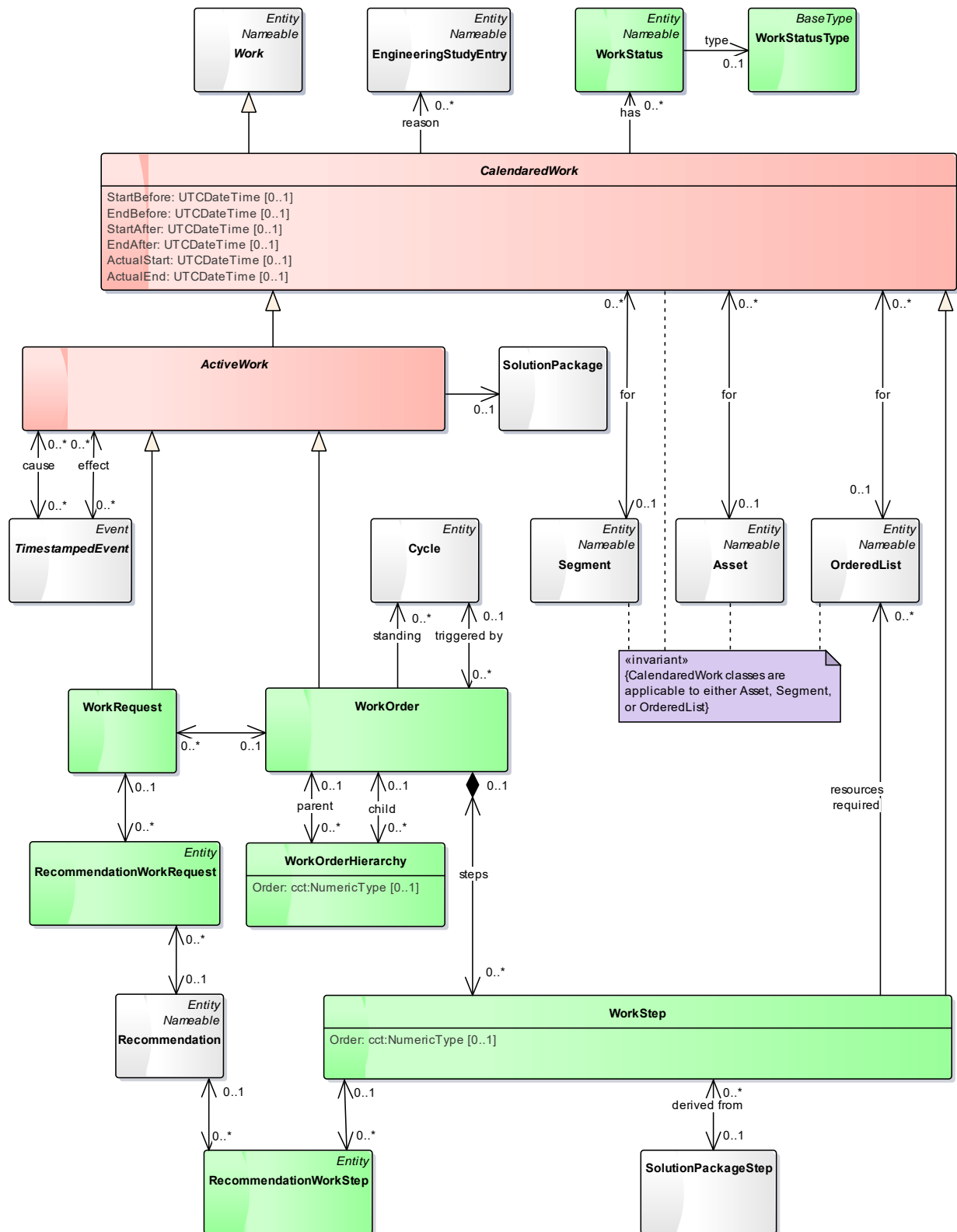
### Diagram: 27 - Solution Packages



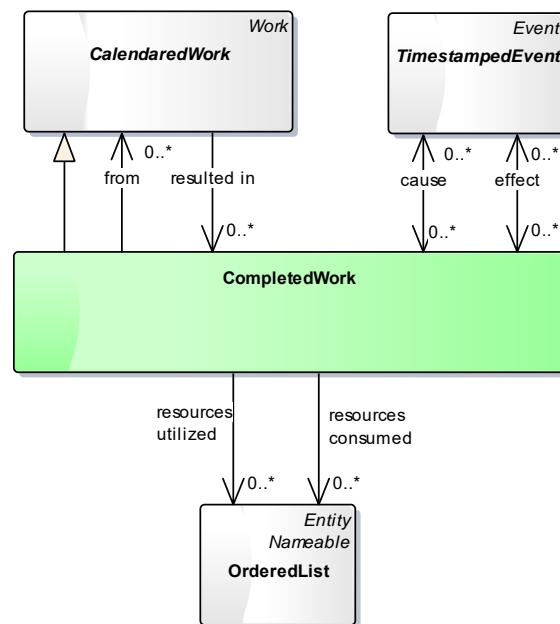
**Diagram: 28 - Requests**



### Diagram: 29 - Work Management



**Diagram: 30 - Completed Work**



**Diagram: 31 - Documents**

