



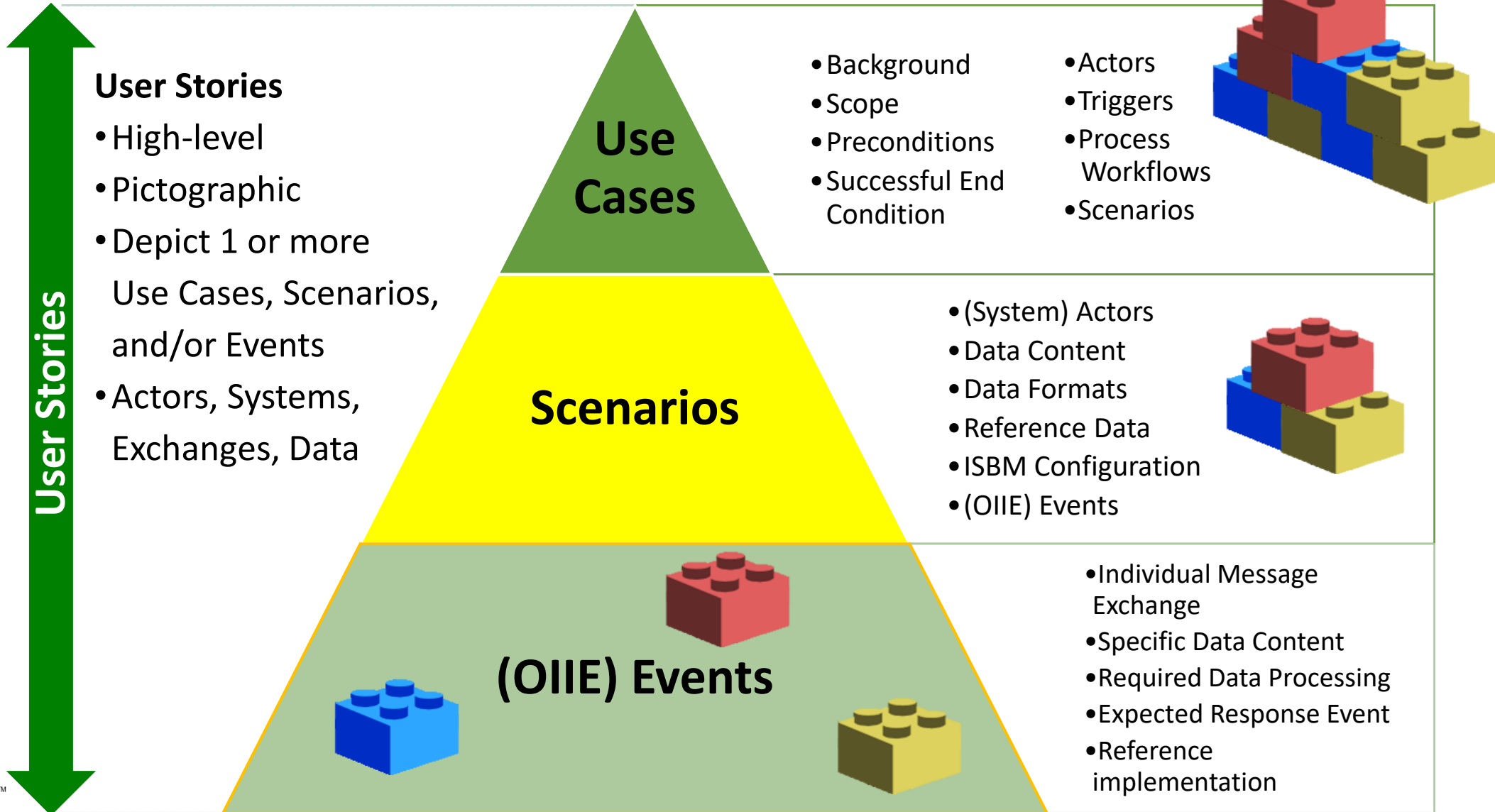
Open Standards for
Physical Asset Management

OIE Scenarios Specification

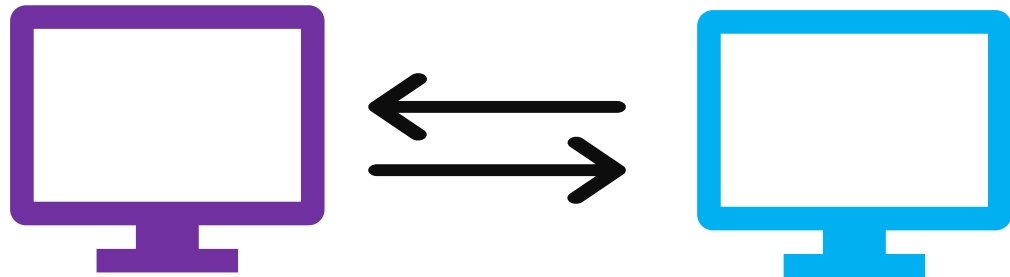
Karamjit Kaur, Matt Selway
University of South Australia

OIIE Standardized Use Case Architecture

Standardized Methodology to Define and Re-use OIIE Components



OIIE Scenario Specification



(System) Actors

Data Content

Data Formats

Reference Data

ISBM Configuration

(OIIE) Events

SC-11: Publish Asset Removal/Installation events from MMS to O&M (Abridged)

Overview

In order to notify other O&M systems that a serialized asset has been installed or removed, the Work Management System (WMS) publishes an asset install or removal event to all relevant O&M systems.

Actors

[system actors only in Scenarios]

Work Management System	Send notifications of changes in asset configuration
O&M Systems	Receive notifications of changes in asset configuration

SC-11: Publish Asset Removal/Installation events from MMS to O&M (Abridged)

Data Content

The data sent from the WMS to other O&M Systems is at least:

- Functional location; serialized asset; timestamp when install/remove occurred

Additional contextual data may be sent:

- Agent performing the work; calendared maintenance work order

[lists general types and relevant specific reference data that is to be used]

MIMOSA CCOM Reference Types

- 'Installation of Asset on Segment' Event Type,
UUID: ecc99353-412b-4995-bd71-1cbc6fc16c7c
- 'Removal of Asset on Segment' Event Type,
UUID: 3a45e126-b234-42a0-b3b1-07c29522d02d

SC-11: Publish Asset Removal/Installation events from MMS to O&M (Abridged)

Data Formats

[Indicates any constraints on specific data formats]

The data published by the Work Management System and received by other O&M Systems must conform to MIMOSA CCOM BODs.

[Note: Does not specify *which* BODs; the Events determine that.]

System Interoperability Events

- Publish Asset Configuration Change
 - This maps to a publish-subscribe BOD: SyncAssetSegmentEvents

[there may be several events, but only 1 in this Scenario]

SC-11: Publish Asset Removal/Installation events from MMS to O&M (Abridged)

Infrastructural Components

[includes requirements based around the use of specific OIIE components such as the ISBM, SDAIR, *Transform Engine*, *CIR*, etc.]

ISBM

The communication between all systems occurs via the ISBM using **publish-subscribe services**.

Implementation Requirements

- The Work Management System must implement a client for the Provider Publication and Channel Management (only the GetChannel operation) Services.
- O&M Systems must implement a client for the Consumer Publication and Channel Management (only the GetChannel operation) Services. O&M Systems may implement the ISBM Notify Listener Service for message notification.

SC-11: Publish Asset Removal/Installation events from MMS to O&M (Abridged)

Suggested Channel/Topic Configuration

Channels and topics should be declared following the ISBM Guidelines.

Example channel path:

/Enterprise/Refinery A/Area A/Light Ends Area/ISO18435:D1.3/ Publication

*[/Enterprise/<Enterprise
Subdivision>/<...>/ISO18435:<domain>/<'Publication' | 'Request'>]*

Example Topic Name:

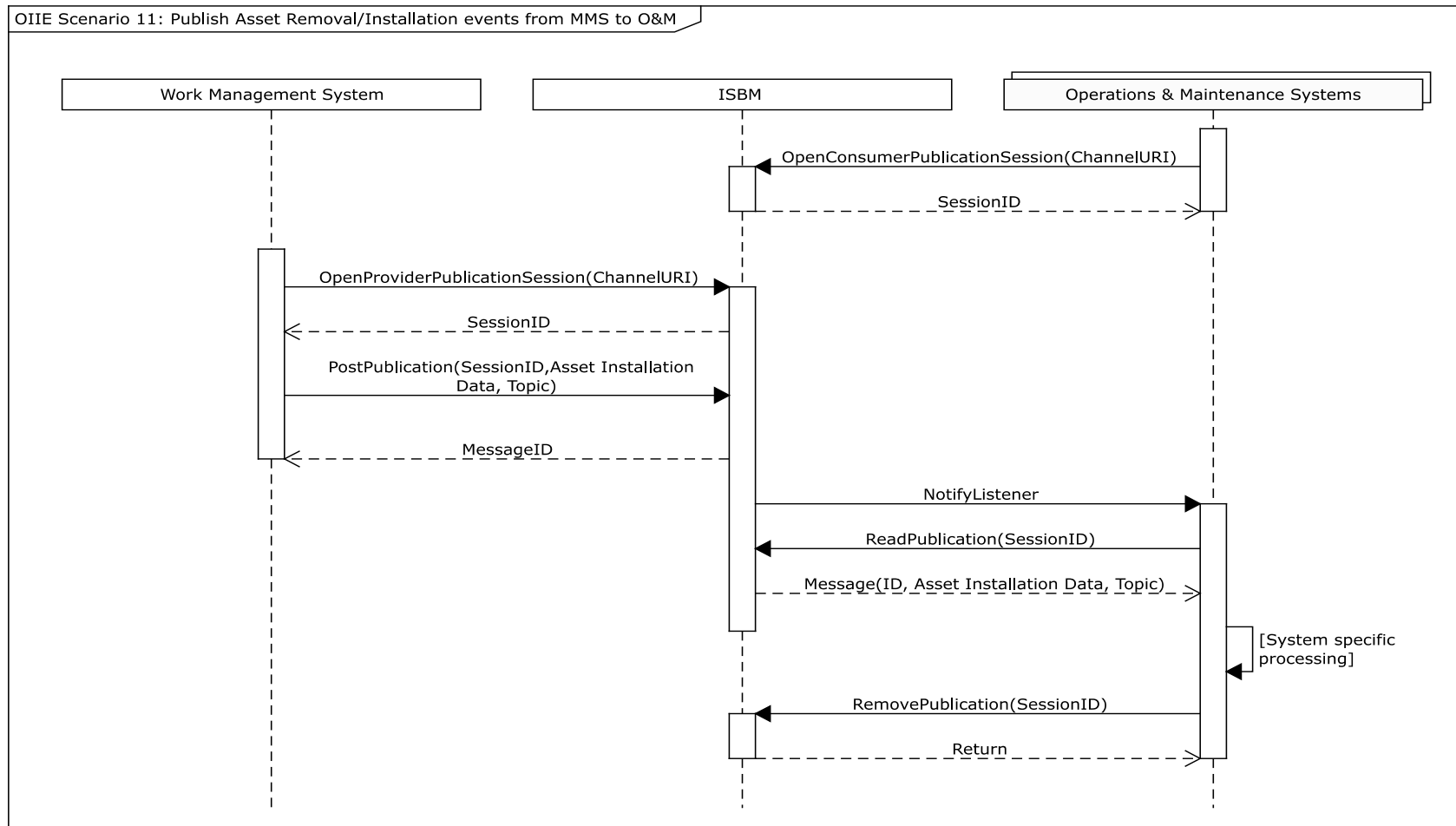
OIIE:S11:V1.1/CCOM-XML:SyncAssetSegmentEvents:V1.0

[OIIE:<ScenarioAbbreviation>:<Version>/<StandardSchemaName>{:<Version>}]

Event Sequence

(see next slide)

SC-11: Publish Asset Removal/Installation events from MMS to O&M Event Sequence



Resources

- OIIE Use Case Architecture Description – <https://openoandm.org/files/standards/01-Use%20Case%20Architecture%20Description.pdf>
- OIIE Scenario Specification Example – <https://openoandm.org/files/standards/scenarios/OIIE%20Scenario%2011.pdf>